

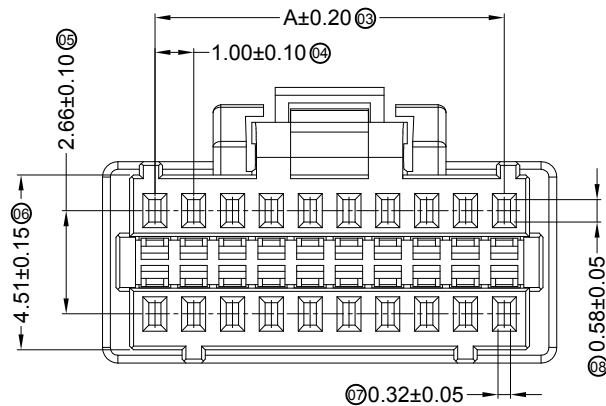
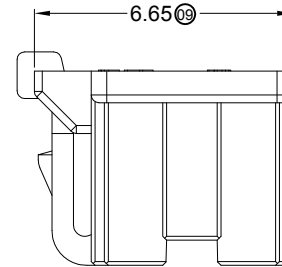
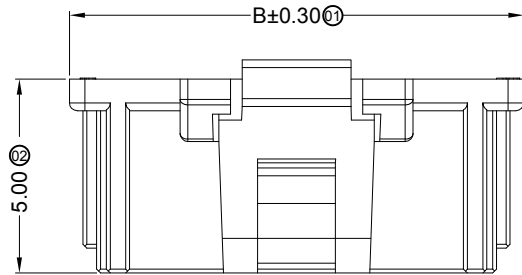
■ Specifications :

- Voltage rating: 50V AC / DC
- Current rating: 1A AC / DC
- Withstanding voltage: 250V AC/minute
- Temperature range: -25°C~+85°C
- Insulation resistance: ≥100MΩ
- Contact resistance: ≤20mΩ
- After environmental testing: ≤40mΩ

1004 H X-2*XX X-N0 XX


① ② ③ ④ ⑤ ⑥ ⑦

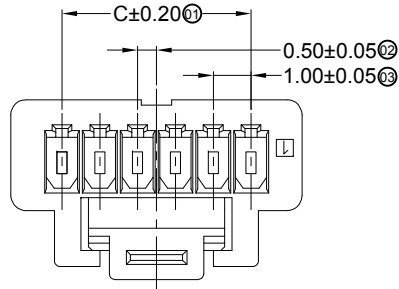
- ① Series No.
- ② Category: H-HSG
- ③ Welding Board Angle: Blank-ordinary
- ④ Row No.-Pin No.: 2*XX-Double row
- ⑤ Plug the Pin & special No.
- ⑥ Material: N0-PA66 94V-0
- ⑦ Color: Blank-natural color



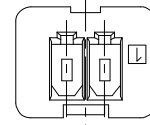
Poles	Dimensions (mm)	
	A	B
20	9.00	11.70
30	14.00	16.70
32	15.00	17.70
40	19.00	21.70
50	24.00	26.70

1004H-2*XX-N0	Nylon 66 UL 94V-0	1004T	1004W
PART NO	Material	Suitable SWB Terminal	Mates SWB Wafer

							<p>GENERAL TOLERANCE</p> <p>.X ±0.30</p> <p>.XX ±0.20</p> <p>.XXX ±0.10</p>				<p>SWB 思索连接器有限公司</p> <p>TERMINAL&CONNECTORS SWB CONNECTORS CO.,LTD</p>				<p>PART NO. 1004H-2*XX-N0</p>			
							<p>APPROVAL CHECK DRAWN DATA</p>				<p>TITLE 1.00 mm Crimp Style Connectors</p>							
DATE	OLD REV	NEW REV	ECN	DESCRIPTION	CHECK	APPROVAL	PROJECT	Bob Sun	Jova Lau	Allen	2013/08/31	UNIT	SCALE	NUMBER	REV			
												MM	1:1	A-070	A			



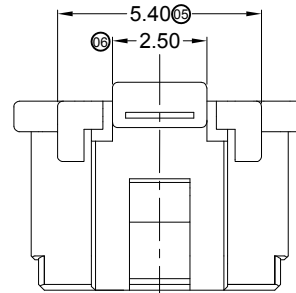
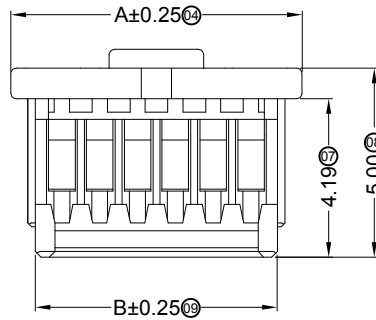
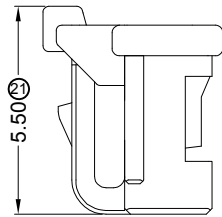
6PIN~15PIN



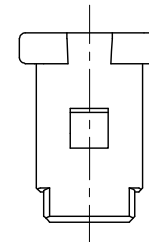
2PIN~5PIN

Specifications :

- Voltage rating: 50V AC / DC
- Current rating: 1A AC / DC
- Withstanding voltage: 250V AC/minute
- Temperature range: -25°C~+85°C
- Insulation resistance: ≥100MΩ
- Contact resistance: ≤20mΩ
- After environmental testing: ≤40mΩ



6PIN~15PIN

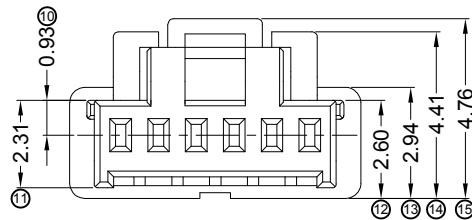


2PIN~5PIN

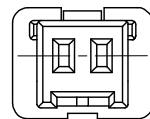
1004 H X-XX XX- N0 XX HF

① ② ③ ④ ⑤ ⑥ ⑦ ⑧

- ① Series No.
- ② Category: H-HSG
- ③ Welding Board Angle: Blank-ordinary
- ④ Row No.-Pin No.: XX-Single row
- ⑤ Plug the Pin & special No.:
- ⑥ Material: N0-PA66 94V-0
- ⑦ Color: Blank-natural color
- ⑧ HF-Halogen Free



6PIN~15PIN



2PIN~5PIN

Poles	Dimensions (mm)			Poles	Dimensions (mm)		
	A Δ	B	C		A	B	C
02	3.70	2.40	1.00	09	10.70	9.40	8.00
03	4.70	3.40	2.00	10	11.70	10.40	9.00
04	5.70	4.40	3.00	11	12.70	11.40	10.00
05	6.70	5.40	4.00	12	13.70	12.40	11.00
06	7.70	6.40	5.00	13	14.70	13.40	12.00
07	8.70	7.40	6.00	14	15.70	14.40	13.00
08	9.70	8.40	7.00	15	16.70	15.40	14.00

1004H-XX-N0HF	Nylon 66 UL 94V-0	1004T
PART NO	Material	Suitable SWB Terminal

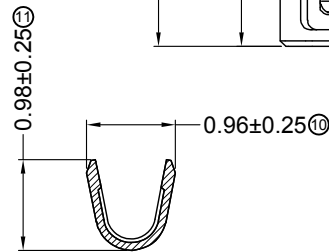
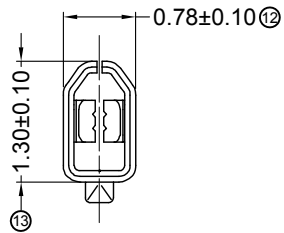
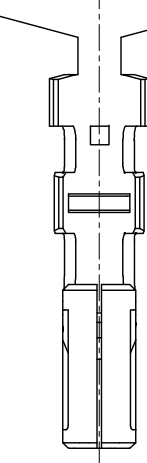
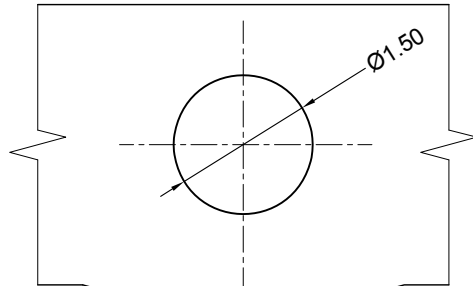
DATE	OLD REV	NEW REV	ECN	DESCRIPTION	CHECK	APPROVAL	PROJECT	APPROVAL	CHECK	DRAWN	DATA	UNIT	SCALE	NUMBER	REV
2014/07/16	B	C		Change Pin6-15 A Dimensions	Sylvia		GENERAL TOLERANCE					MM	1:1	A-106	C
2014/02/12	A	B		Space of a Whole page Changes	Allen		.X ±0.30								
							.XX ±0.20								
							.XXX ±0.10								

SWB 思索连接器有限公司
TERMINAL & CONNECTORS SWB CONNECTORS CO.,LTD

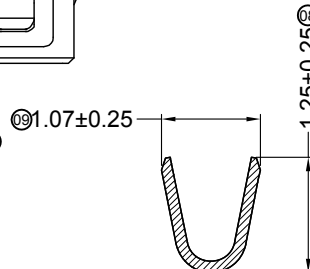
PART NO. 1004H-XX-N0HF
TITLE 1.00 mm Crimp Style Connectors

APPROVAL Bob Sun
CHECK Jova Lau
DRAWN Allen
DATA 2013/08/31

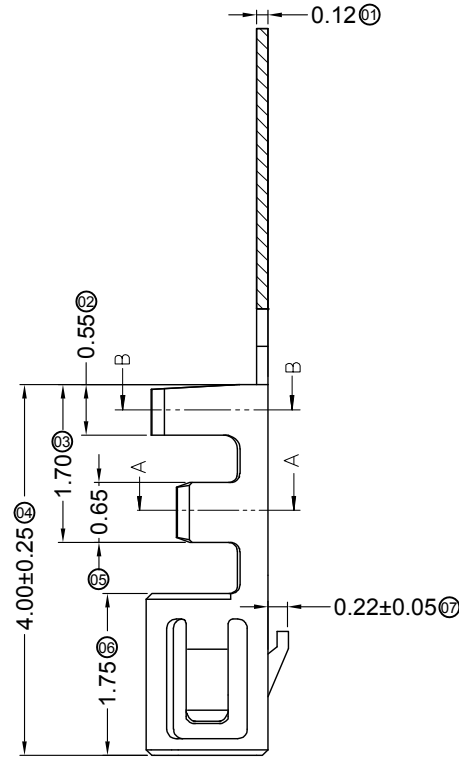
RoHS  Lead-free



SECTION A-A
SCALE 1 : 1



SECTION B-B
SCALE 1 : 1





■ Specifications :

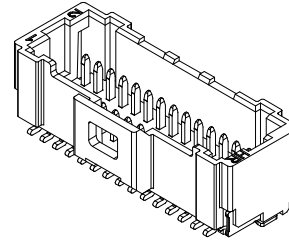
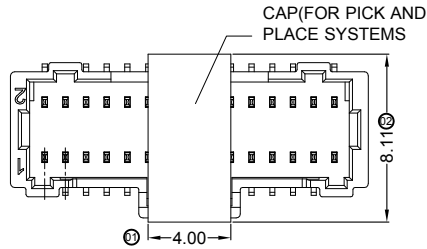
- Voltage rating: 50V AC / DC
- Current rating: 1A AC / DC
- Withstanding voltage: 250V AC/minute
- Temperature range: -25°C~+85°C
- Insulation resistance: ≥100MΩ
- Contact resistance: ≤20mΩ
- After environmental testing: ≤40mΩ

1004 T X-P VXX X-X
① ② ③ ④ ⑤ ⑥ ⑦

- ① Series Number
- ② Category: T-terminal
- ③ Shape: Blank-ordinary
- ④ Material: P-Phosphor bronze
- ⑤ Plating style:
V-All Gold-Plated
*01-Gold Flash ; *02-2u" ; *03-3u" ; *05-5u"
*10-10u" ; *15-15u" ; *30-30u" ; *50-50u"
SN-Bright tin plating 70-120u"
SN1-Bright tin plating 120u"Min.
SW-Fog Tin plating
0-No plating material
- ⑥ Plating method:
Blank-Stamping before plating
- ⑦ Mold No./Mark/Special No.

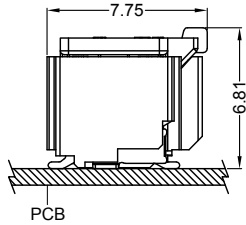
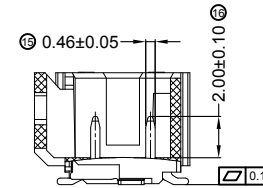
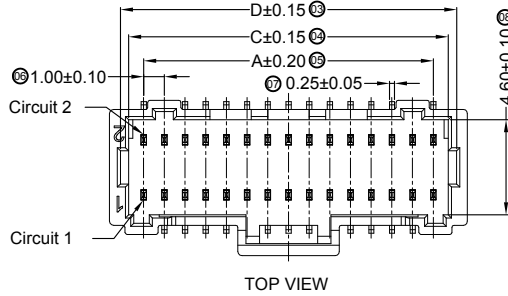
1004T-PSN	Phosphor Bronze	AWG#28-32	0.80mm(Max)	Stamping Before Pating:30~50u" Ni;70~120u" Tin	1004H
1004T-PV01	Phosphor Bronze	AWG#28-32	0.80mm(Max)	Stamping Before Pating:30~50u" Ni;Whole Gold :Gold Flash	1004H
PART NO	Material	Wire Range	Insulation O.D.	Finish	Used In SWB Housing

							GENERAL TOLERANCE .X ±0.30 .XX ±0.20 .XXX ±0.10				 思索连接器有限公司 SWB CONNECTORS CO.,LTD				PART NO. 1004T-PXX			
							APPROVAL Bob Sun CHECK Jova Lau DRAWN Luna DATA 2013/09/16				TITLE 1.00 mm Crimp Style Connectors							
DATE	OLD REV	NEW REV	ECN	DESCRIPTION	CHECK	APPROVAL	PROJECT	UNIT	SCALE	NUMBER	REV							
								MM	1 : 1	A-041	A							

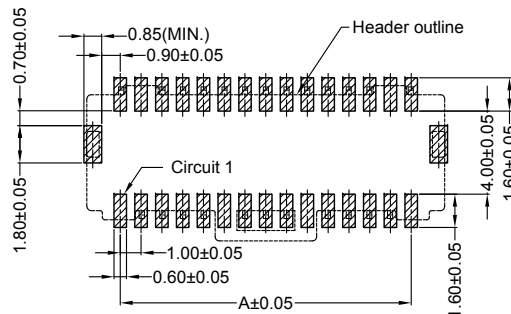
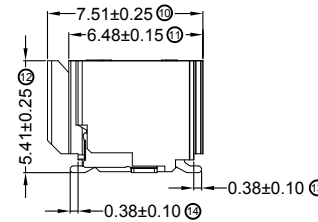
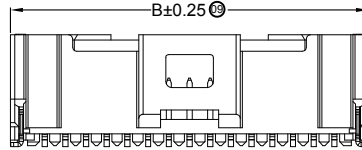


■ Specifications :

- Voltage rating: 50V AC / DC
- Current rating: 0.8A AC / DC
- Withstanding voltage: 250V AC/minute
- Temperature range: -25°C~+85°C
- Insulation resistance: ≥100MΩ
- Contact resistance: ≤20mΩ
- After environmental testing: ≤30mΩ



MATED CONDITION



P.C.B LAYOUT
(TOP VIEW)

1004 W V S-2*XX X-6T XX XX
① ② ③ ④ ⑤ ⑥ ⑦ ⑧ ⑨

- ① Series No.
- ② Category: W-wafer
- ③ Welding Board Angle: V-180°
- ④ Welding Way: S-SMT
- ⑤ Row No.-Pin No.: 2*XX-Double
- ⑥ Plug the Pin & Special NO.
- ⑦ Material: 6T-PA6T 94V-0
- ⑧ Planting Category:
V:All Gold-Plated G:Gold-Plated Contact
S-Silver Plating
*01-Gold Flash ; *02-2u" ; *03-3u" ; *05-5u"
*10-10u" ; *15-15u" ; *30-30u" ; *50-50u"
SN-Bright tin plating 70-120u"
SN1-Bright tin plating 120u"Min.
SW-Fog Tin plating HS-High temperature Tin
- ⑨ Color: Blank-Natural color

Poles	Dimensions (mm)			
	A	B	C	D
16	7.00	10.30	8.45	9.25
20	9.00	12.30	10.45	11.25
30	14.00	17.30	15.45	16.25
32	15.00	18.30	16.45	17.25
40	19.00	22.30	20.45	21.25
50	24.00	27.30	25.45	26.25

1004WVS-2*XX-6TV01	PA6T UL 94V-0	Brass	Gold-Flash	Brass	Tin Plating Fog	1004H
PART NO	Material	Material(Pin)	Finish(Pin)	Material(Solder Tabs)	Finish(Solder Tabs)	Mates With SWB Housing

							<p>GENERAL TOLERANCE</p> <p>.X ±0.30</p> <p>.XX ±0.20</p> <p>.XXX ±0.10</p>				<p>SWB 思索连接器有限公司</p> <p>TERMINAL&CONNECTORS SWB CONNECTORS CO.,LTD</p>				<p>PART NO. 1004WVS-2*XX-6TV01</p>							
Space of a Whole page Changes							APPROVAL				CHECK				DRAWN				DATA			
sylvia							Bob Sun				Jova Lau				Allen				2013/08/12			
PROJECT							UNIT				SCALE				NUMBER				REV			
DATE							MM				1 : 1				A-106				B			