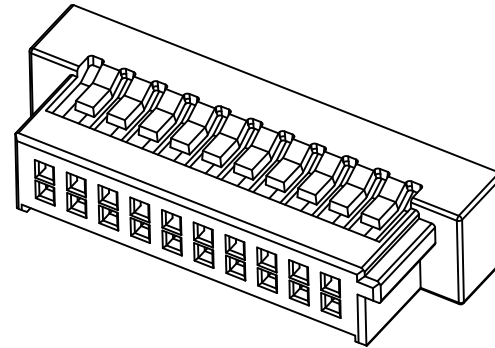
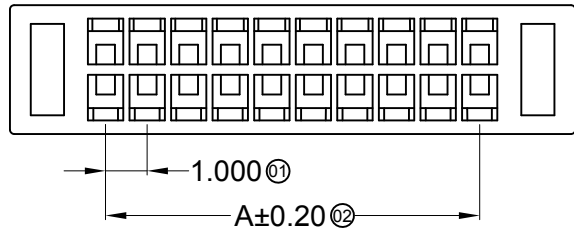


RoHS  Lead-free



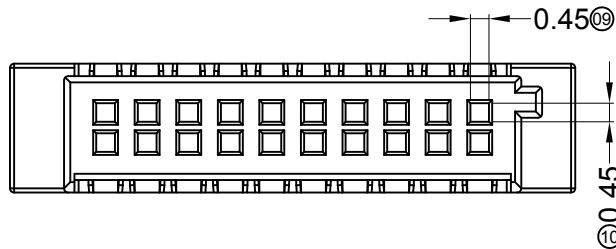
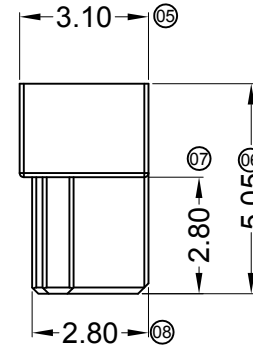
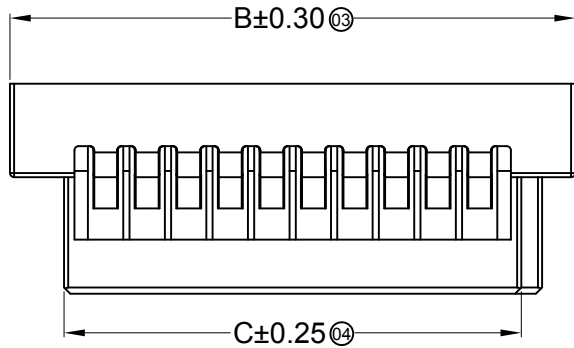
Specifications :

- Voltage rating: 50V AC / DC
- Current rating: 1A AC / DC
- Withstanding voltage: 250V AC/minute
- Temperature range: -40°C~+85°C
- Insulation resistance: ≥100MΩ
- Contact resistance: ≤20mΩ
- After environmental testing: ≤40mΩ

1102 H X - 2*XX X-46 XX

① ② ③ ④ ⑤ ⑥ ⑦

- ① Series No.
- ② Category: H-HSG
- ③ Welding Board Angle: Blank-ordinary
- ④ Row No.-Pin No.: 2*XX-Double row
- ⑤ Plug the Pin & special No.
- ⑥ Material: 46-PA46 94V-0
- ⑦ Color: Blank-natural color

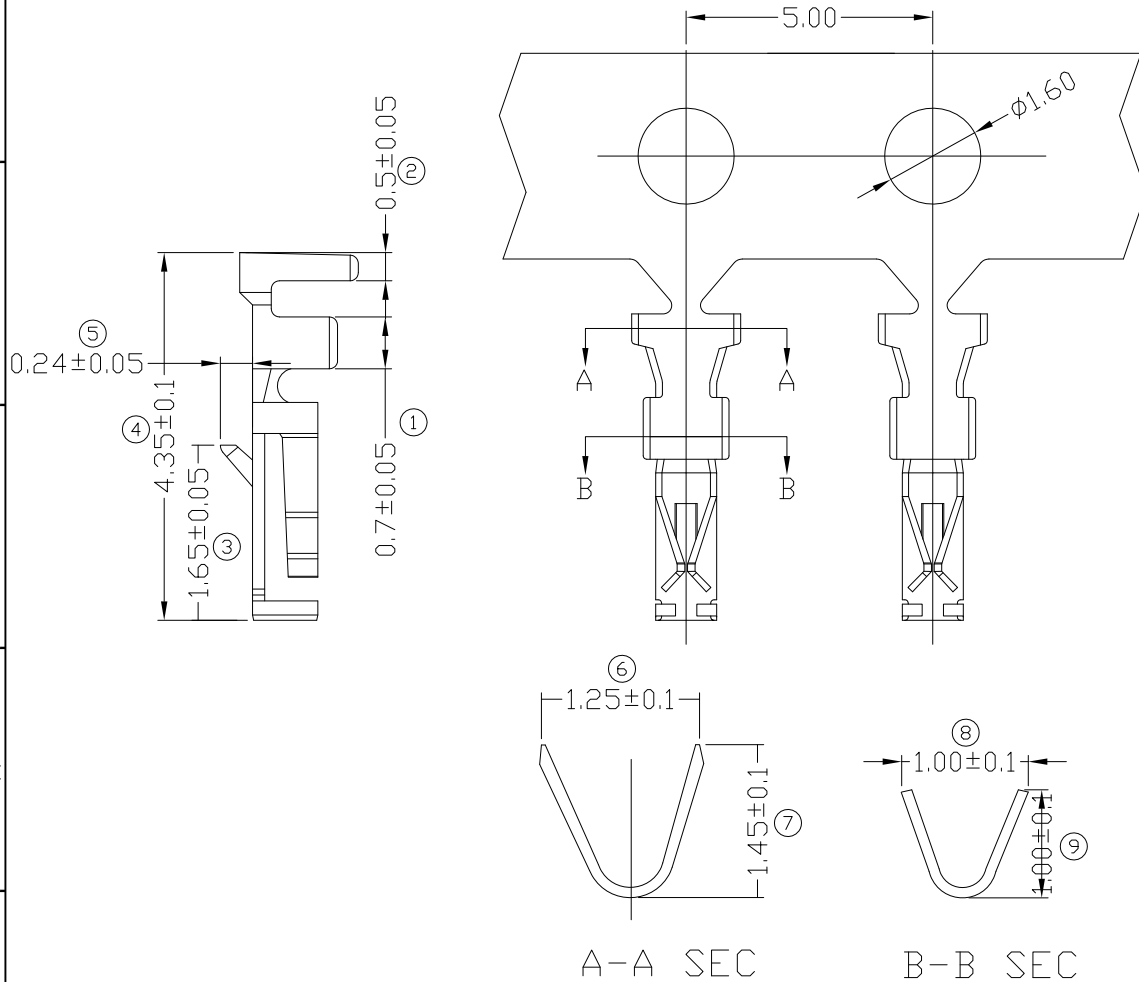


Poles	Dimensions(mm)			Poles	Dimensions(mm)		
	A	B	C		A	B	C
2*03	2.00	6.60	4.00	2*13	12.00	16.60	14.00
2*04	3.00	7.60	5.00	2*14	13.00	17.60	15.00
2*05	4.00	8.60	6.00	2*15	14.00	18.60	16.00
2*06	5.00	9.60	7.00	2*16	15.00	19.60	17.00
2*07	6.00	10.60	8.00	2*17	16.00	20.60	18.00
2*08	7.00	11.60	9.00	2*18	17.00	21.60	19.00
2*09	8.00	12.60	10.00	2*25	24.00	28.60	26.00
2*10	9.00	13.60	11.00				
2*11	10.00	14.60	12.00				
2*12	11.00	15.60	13.00				

1102H-2*XX-46	Nylon 46 UL 94V-0	1102T	1102W
PART NO	Material	Suitable SWB Terminal	Suitable SWB Wafer

							GENERAL TOLERANCE .X ±0.30 .XX ±0.20 .XXX ±0.10				SWB 思索连接器有限公司 TERMINAL&CONNECTORS SWB CONNECTORS CO.,LTD				PART NO. 1102H-2*XX-46			
							APPROVAL Bob Sun CHECK Jova Lau DRAWN yan.Liu DATA 2007/05/03				TITLE 1.00mm Crimp Style Connectors							
2014/09/08	B	C		Modify the drawing frame format	Jova		UNIT MM SCALE 1:1 NUMBER A-041 REV C											
DATE	OLD REV	NEW REV	ECN	DESCRIPTION	CHECK	APPROVAL	PROJECT	APPROVAL	CHECK	DRAWN	DATA	UNIT	SCALE	NUMBER	REV			

环保物料



■ Specifications(规格) :

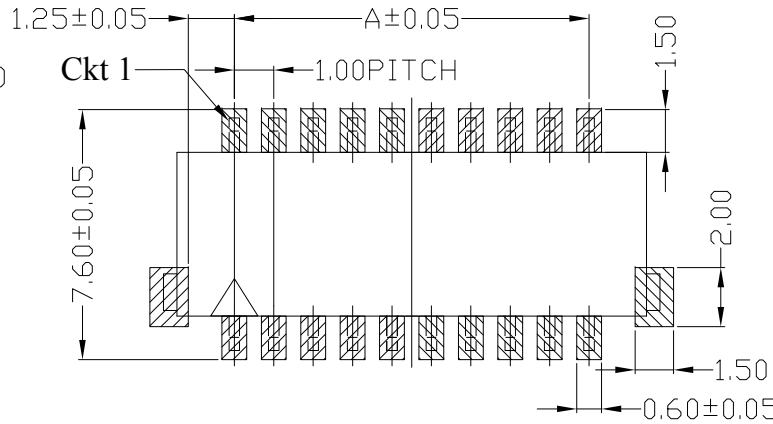
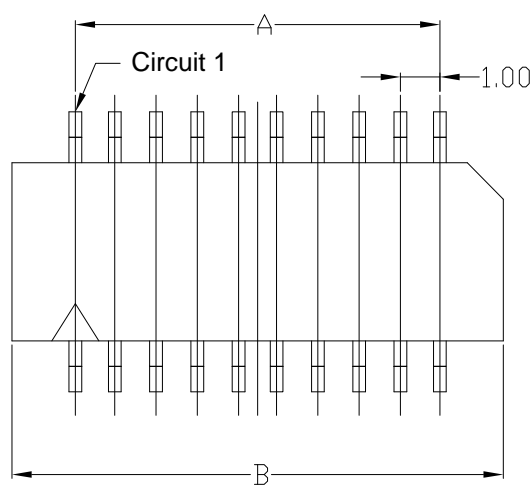
- Voltage rating(额定电压): 50V AC / DC
- Current rating(额定电流): 1A AC / DC
- Withstanding voltage(耐压值): 500V AC/minute
- Temperature range(工作温度): -25°C~+85°C
- Insulation resistance(绝缘电阻): $\geq 100M\Omega$
- Contact resistance(接触电阻): $\leq 20m\Omega$
- After environmental testing(环境测试后): $\leq 30m\Omega$

1102 T X-P V01 X-X
① ② ③ ④ ⑤ ⑥ ⑦

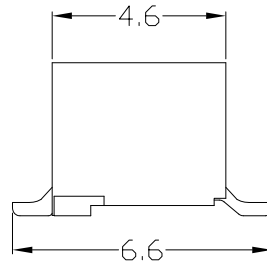
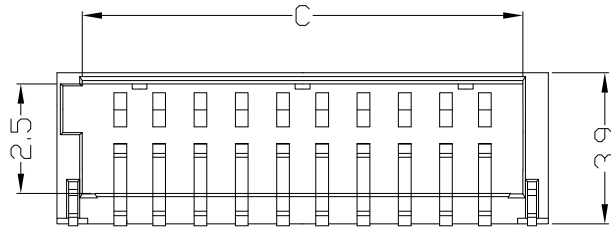
- ①系列
- ②类别:
T-端子
- ③外观形态:
空码-普通脚
- ④材质:
P-磷铜
- ⑤电镀类别:V**-镀全金
*01-Gold Flash *02-2U" *03-3U" *05-5U"
*10-10U" *15-15U" *30-30U" *50-50U"
SN-镀亮锡(70U") SN1-镀亮锡(120U"Min.)
0-素材 SW-镀雾锡
- ⑥电镀方式:
空码-先冲后镀
- ⑦模号/MARK及特殊码

1102T-PSN	Phosphor Bronze	AWG#28-32	0.80mm(Max)	Stamping Before Pating:30~50u" Ni;Whole Gold :1u" Min.	1102H	20,000Pcs
1102T-PV01	Phosphor Bronze	AWG#28-32	0.80mm(Max)	Stamping Before Pating:30~50u" Ni;Whole Gold :1u" Min.	1102H	20,000Pcs
PART NO	Material	Wire Range	Insulation O.D.	Finish	Used In CSWB Housing	Q' ty/Reel

				一般公差 GENERAL TOLERANCE .X ± 0.3 .XX ± 0.2 .XXX ± 0.1				SWB 思索连接器有限公司 TERMINAL CONNECTORS SWB CONNECTORS CO.,LTD				料号 PART NO 1102T-PXX			
2011/06/30				A B				修改图框格式				品名 TITLE 1.00 mm Crimp Style connectors			
日期 DATE				旧版次 OLD REV				新版次 NEW REV				变更内容 DESCRIPTION			
				审核 CHK				核准 APPD				角法 PROJECT			
				SUCCESS				孙开宝				刘艳			
				2007/05/03				单位 UNIT				比例 SCALE			
				MM				1/1				图号 NUMBER			
				A-103				版次 REV				B			



Recommad PCB Layout



■ Specifications(规格) :

- Voltage rating(额定电压): 50V AC / DC
- Current rating(额定电流): 1A AC / DC
- Withstanding voltage(耐压值): 500V AC/minute
- Temperature range(工作温度): -25°C~+85°C
- Insulation resistance(绝缘电阻): ≥100MΩ
- Contact resistance(接触电阻): ≤20mΩ
- After environmental testing(环境测试后): ≤30mΩ

1102 WRS-2*XX X-XX V01 XX
① ② ③ ④ ⑤ ⑥ ⑦ ⑧ ⑨

- ①系列
- ②类别: W-WAFER类
- ③外观形态:
R-90° (带脚式)
- ④成型方式:
S-SMT
- ⑤PIN数:
双排-2*XX
- ⑥空PIN位置及特殊码
- ⑦材质:
46-PA46 N0-PA66 94V-0
- ⑧电镀类别:G**-镀金 V**-镀全金
*01-1U" *02-2U" *03-3U" *05-5U"
*10-10U" *15-15U" *30-30U" *50-50U"
SN-镀亮锡(70-120U") SN1-镀亮锡(120U"Min.)
SW-镀雾锡 HS-高温锡
- ⑨颜色:
空码-本色或普通色

1102WRS-2*XX-46V01	Nylon 46 UL 94V-0	Brass	Tin-Plated	1102H	1,000Pcs
1102WRS-2*XX-N0V01	Nylon 66 UL 94V-0	Brass	Gold-Flash	1102H	1,000Pcs
PART NO	Material	Material(Pin)	Finish(Pin)	Mates With CSWB Housing	Q' ty/Reel

Poles	Dimensions (mm)			Poles	Dimensions (mm)		
	A	B	C		A	B	C
06	2.00	5.60	4.20	24	11.00	14.60	13.20
08	3.00	6.60	5.20	26	12.00	15.60	14.20
10	4.00	7.60	6.20	28	13.00	16.60	15.20
12	5.00	8.60	7.20	30	14.00	17.60	16.20
14	6.00	9.60	8.20	32	15.00	18.60	17.20
16	7.00	10.60	9.20	34	16.00	19.60	18.20
18	8.00	11.60	10.20	36	17.00	20.60	19.20
20	9.00	12.60	11.20	40	19.00	22.60	21.20
22	10.00	13.60	12.20	50	24.00	27.60	26.20

						<p>GENERAL TOLERANCE</p> <p>.X ±0.30</p> <p>.XX ±0.20</p> <p>.XXX ±0.10</p>				<p>SWB 思索连接器有限公司</p> <p>Terminal & Connectors SWB CONNECTORS CO., LTD</p>				<p>PART NO. 1102WRS-2*XX-XXV01</p>			
2011/06/30				A B		修改图框格式				<p>TITLE 1.00 mm Crimp Style connectors</p>							
DATE	OLD REV	NEW REV	ECN	DESCRIPTION	CHECK	APPROVAL	PROJECT	APPROVAL	CHECK	DRAWN	DATA	UNIT	SCALE	NUMBER	REV		
							⊕		SUCCESS	孙开宝	刘艳	MM	1/1	A-106	B		