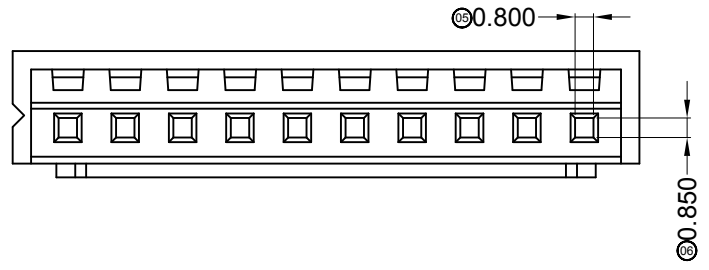
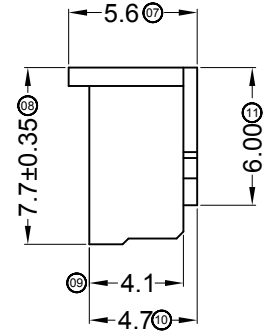
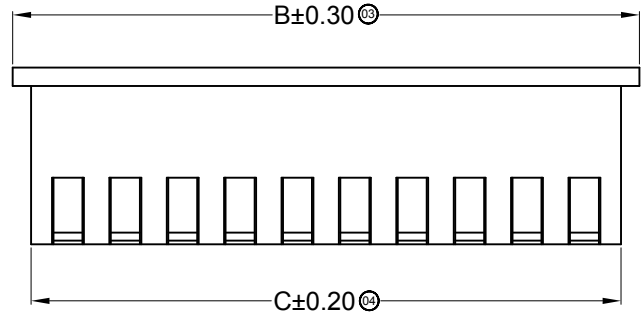
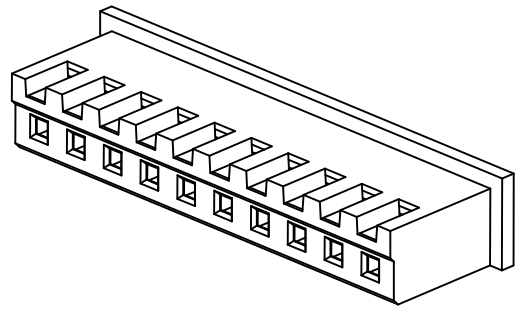
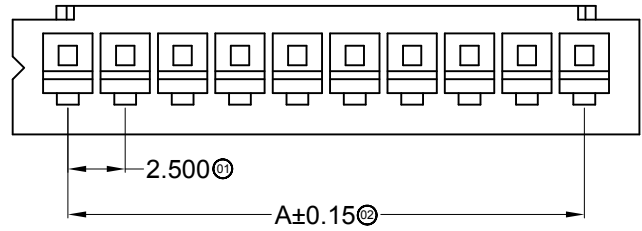


RoHS  Lead-free



**Specifications :**


- Voltage rating: 250V AC / DC
- Current rating: 3A AC / DC
- Withstanding voltage: 1000V AC/minute
- Temperature range: -25°C~+85°C
- Insulation resistance: ≥1000MΩ
- Contact resistance: ≤10mΩ
- After environmental testing: ≤20mΩ

8821 H X-XX X-N0 XX  
 ① ② ③ ④ ⑤ ⑥ ⑦

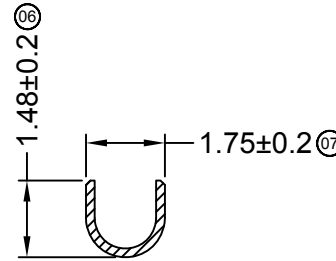
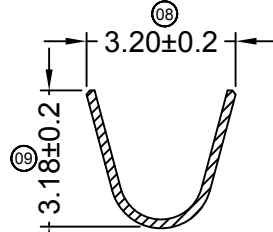
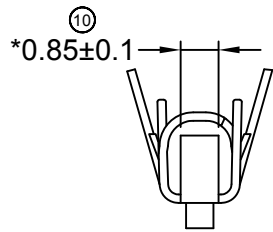
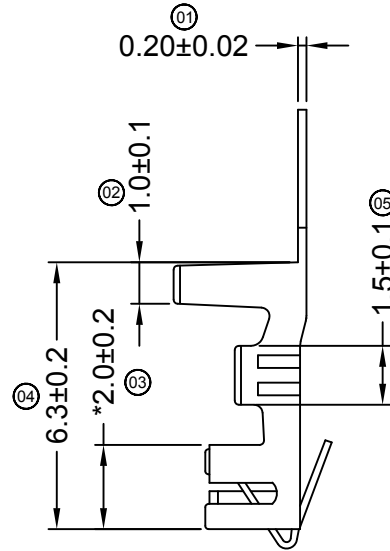
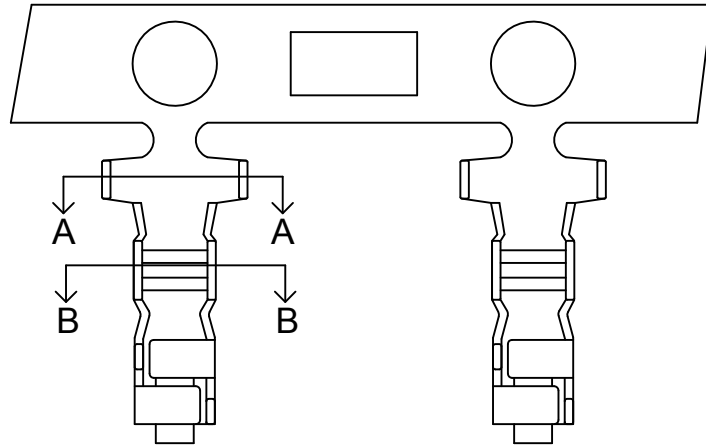
- ① Series No.
- ② Category: H-HSG
- ③ Appearance type: Blank-Ordinary
- ④ Row No.-Pin No.: XX-Single Row
- ⑤ Plug the Pin & Special No. Blank-Ordinary
- ⑥ Material : N0-PA66 94V-0
- ⑦ Color: Blank : Natural Color

Poles	Dimensions(mm)			Poles	Dimensions(mm)		
	A	B	C		A	B	C
02	2.50	7.30	5.70	10	22.50	27.30	25.70
03	5.00	9.80	8.20	11	25.00	29.80	28.20
04	7.50	12.30	10.70	12	27.50	32.30	30.70
05	10.00	14.80	13.20	13	30.00	34.80	33.20
06	12.50	17.30	15.70	14	32.50	37.30	35.70
07	15.00	19.80	18.20	15	35.00	39.80	38.20
08	17.50	22.30	20.70	16	37.50	42.30	40.70
09	20.00	24.80	23.20				

8821H-XX-N0	Nylon 66 UL 94V-0	8821T	8821W、8821HF
PART NO	Material	Suitable SWB Terminal	Mates With SWB Wafer Or Housing

2014/12/25	E	F		Space of a Whole page Changes	sylvania		<b>GENERAL TOLERANCE</b> .X ±0.30 .XX ±0.20 .XXX ±0.10	 <b>思索连接器有限公司</b> <b>SWB CONNECTORS CO.,LTD</b>				PART NO. 8821H-XX-N0			
2014/09/16	D	E		Change DIM tolerance	sylvania							TITLE 2.50mm Crimp style Connector			
2013/11/21	C	D		Add ⑬ ⑭ DIM	Jova			APPROVAL	CHECK	DRAWN	DATA	UNIT	SCALE	NUMBER	REV
DATE	OLD REV	NEW REV	ECN	DESCRIPTION	CHECK	APPROVAL	PROJECT	Jova	W.X.T	Jova	2007/07/25	MM	1:1	A-039	F

RoHS  Lead-free



SECTION: A-A  
SCALE: 1:1

SECTION: B-B  
SCALE: 1:1

■ Specifications :



- Voltage rating: 125V AC / DC
- Current rating: 3A AC / DC
- Withstanding voltage: 1000V AC/minute
- Temperature range: -25°C~+85°C
- Insulation resistance: ≥1000MΩ
- Contact resistance: ≤10mΩ
- After environmental testing: ≤20mΩ
- Mark\*\*\*Indicate Dimensions Need To Controlled In Emphasis

8821 T X-X SN X-X

① ② ③ ④ ⑤ ⑥ ⑦

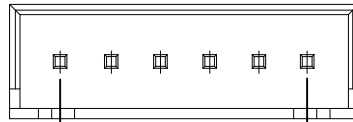
- ① Series No.
- ② Category: T-Terminal
- ③ Appearance type: Blank-Ordinary
- ④ Material: P-Phosphor bronze  
B-Brass
- ⑤ Plating Style: G\*\*-Gold Plated Contact  
V\*\*- All Gold-Plated  
01-1u" 02-2u" 03-3u"  
05-5u" 10-10u" 15-15u"  
SN-Bright Tin Plating (70-120u")  
SN1-Bright Tin Plating (120u" Min).  
0-No Plating Material  
SW- Fog Tin Plating
- ⑥ Plating Method : Blank-Stamping before Plating
- ⑦ Mold No./Mark/Special No.

8821T-BSN	Brass			Stamping Before Plating:30~50u" Ni;70~120u"Sn		
8821T-BSNB				Plating Before Stamping:10~30u" Ni;40~60u"Sn		
8821T-PSNB	Phosphor Bronze	AWG#22-26	1.90mm(Max)	Plating Before Stamping:10~30u" Ni;40~60u"Sn	8821H	8,000Pcs
8821T-PSN				Stamping Before Plating:30~50u" Ni;70~120u"Sn		
PART NO	Material	Wire Range	Insulation O.D.	Finish	Used In CSWB Housing	Qty/Reel

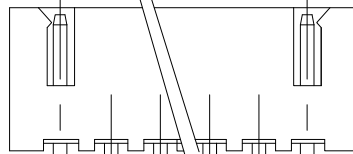
								GENERAL TOLERANCE				PART NO. 8821T-XSN					
								.X ±0.30				TITLE 2.50 mm Crimp Style Connector					
								.XX ±0.20				APPROVAL CHECK DRAWN DATA					
								.XXX ±0.10				Success Sun Kaibao Jova 2007/05/03					
2013/08/23	B	C		Modify drawing frame format	Jova			PROJECT		UNIT MM		SCALE 1:1		NUMBER A-106		REV B	
DATE	OLD REV	NEW REV	ECN	DESCRIPTION	CHECK	APPROVAL				Success	Sun Kaibao	Jova	2007/05/03				

**SWB** 东莞市思索连接器有限公司  
DongGuan Siweb Connectors CO.,LTD

RoHS  Lead-free



(02P-14P)A±0.25  
(15P-20P)A±0.35

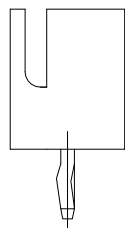


(02P-08P)B±0.25  
(09P-14P)B±0.35  
(15P-20P)B±0.50

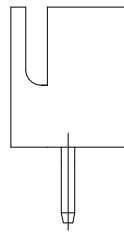
Circuit1

2.50±0.10

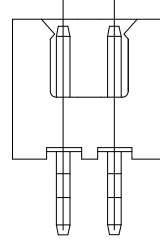
④ SQ0.64±0.05



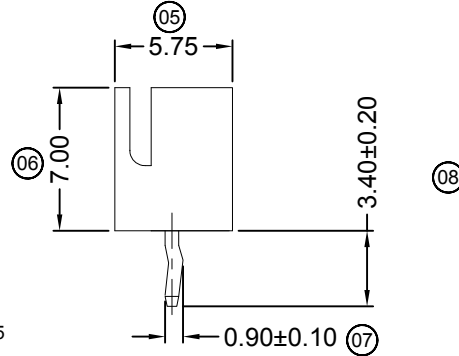
K1(Opposite Kink)



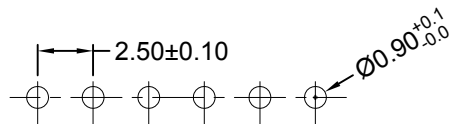
Without Kink



2P



K(With Kink)



P.C.B LAYOUT

■ Specifications :

- Voltage rating: 250V AC / DC
- Current rating: 3A AC / DC
- Withstanding voltage: 1000V AC/minute
- Temperature range: -25°C~+85°C
- Insulation resistance: ≥1000MΩ
- Contact resistance: ≤10mΩ
- After environmental testing: ≤20mΩ

8821 W V X-XX K -N0 SN XX  
① ② ③ ④ ⑤ ⑥ ⑦ ⑧ ⑨

- ① Series No.
- ② Category: W-WAFER
- ③ Welding Board Angle: V-Stright 180°
- ④ Welding Way: Blank-DIP ;
- ⑤ Row No.-Pin No.: XX-Single Row ;
- ⑥ Plug the Pin & Special No.: K-KINK
- ⑦ Material: N0 -PA66 94V-0
- ⑧ Plating Category: SN-Bright Tin Plating
- ⑨ Color : Blank-Natural Color

Poles	Dimensions(mm)			Poles	Dimensions(mm)		
	A	B	C		A	B	C
02	2.50	7.30	5.70	10	22.50	27.30	25.70
03	5.00	9.80	8.20	11	25.00	29.80	28.20
04	7.50	12.30	10.70	12	27.50	32.30	30.70
05	10.00	14.80	13.20	13	30.00	34.80	33.20
06	12.50	17.30	15.70	14	32.50	37.30	35.70
07	15.00	19.80	18.20	15	35.00	39.80	38.20
08	17.50	22.30	20.70	16	37.50	42.30	40.70
09	20.00	24.80	23.20				

8821WV-XXX-N0SN	Nylon 66 UL 94V-0	Brass	Tin-Plated	8821H
PART NO	Material	Material(Pin)	Finish(Pin)	Mates With SWB Housing

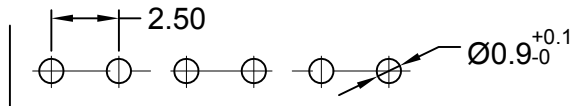
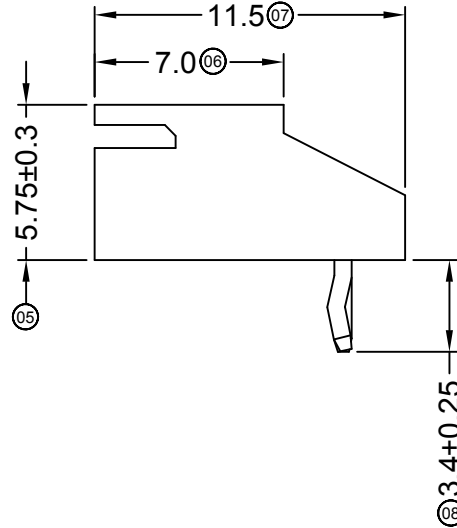
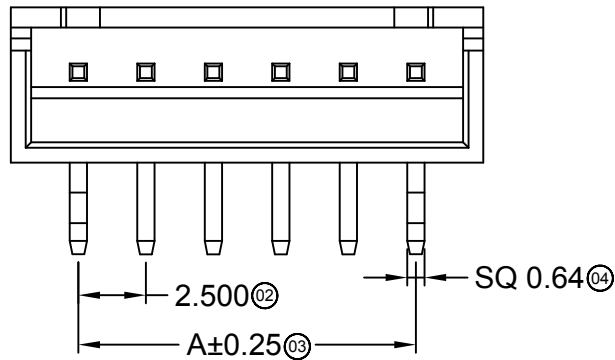
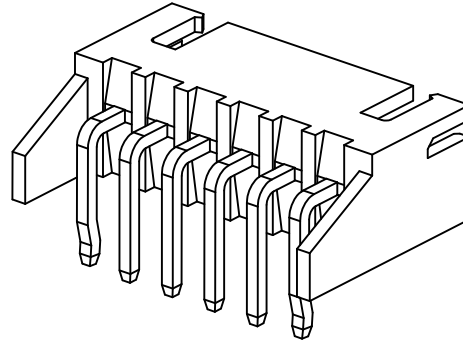
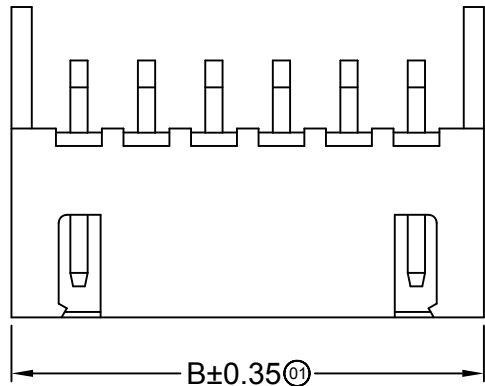
DATE	OLD REV	NEW REV	ECN	DESCRIPTION	CHECK	APPROVAL	PROJECT	APPROVAL	CHECK	DRAWN	DATA	UNIT	SCALE	NUMBER	REV
2013/08/23	A	B		Modify drawing frame format	Jova		GENERAL TOLERANCE .X ±0.30 .XX ±0.20 .XXX ±0.10	Jova	W.X.T	Jova	2013/07/15	MM	1:1	A-106	A

**SWB** 思索连接器有限公司  
SWB CONNECTORS CO.,LTD

PART NO. 8821WV-XXX-N0SN

TITLE 2.50mm Crimp Style Connector

RoHS  Lead-free



Recommended P.C.B Layout  
General Tolerance±0.05

■ Specifications :

- Voltage rating: 250V AC / DC
- Current rating: 3A AC / DC
- Withstanding voltage: 1000V AC/minute
- Temperature range: -25°C~+85°C
- Insulation resistance: ≥1000MΩ
- Contact resistance: ≤10mΩ
- After environmental testing: ≤20mΩ

8821 W R X-XX K -N0 SN XX  
① ② ③ ④ ⑤ ⑥ ⑦ ⑧ ⑨

- ① Series No.
- ② Category: W-WAFER
- ③ Welding Board Angle: R-Right Angle 90°
- ④ Welding Way: Blank-DIP ;
- ⑤ Row No.-Pin No.: XX-Single Row ;
- ⑥ Plug the Pin & Special No.: K-KINK
- ⑦ Material: N0 -PA66 94V-0
- ⑧ Plating Category: SN-Bright Tin Plating
- ⑨ Color : Blank-Natural Color

Poles	Dimensions(mm)		Poles	Dimensions(mm)	
	A	B		A	B
02	2.50	7.50	12	27.50	32.50
03	5.00	10.00	13	30.00	35.00
04	7.50	12.50	14	32.50	37.50
05	10.00	15.00	15	35.00	40.00
06	12.50	17.50	16	37.50	42.50
07	15.00	20.00	17	40.00	45.00
08	17.50	22.50	18	42.50	47.50
09	20.00	25.00	19	45.00	50.00
10	22.50	27.50	20	47.50	52.50
11	25.00	30.00			

8821WR-XXK-N0SN	Nylon 66 UL 94V-0	Brass	Tin-Plated	8821H
PART N0	Material	Material(Pin)	Finish(Pin)	Mates With SWB Housing

DATE	OLD REV	NEW REV	ECN	DESCRIPTION	CHECK	APPROVAL	PROJECT	APPROVAL	CHECK	DRAWN	DATA	UNIT	SCALE	NUMBER	REV
2013/08/23	C	D		Modify drawing frame format	Jova		GENERAL TOLERANCE					MM	1:1	A-105	D
2013/08/23	B	C		Modify drawing frame format	Jova		.X ±0.30								
							.XX ±0.20								
							.XXX ±0.10								

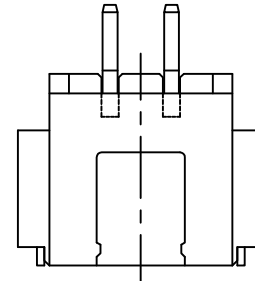
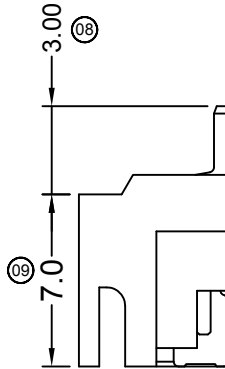
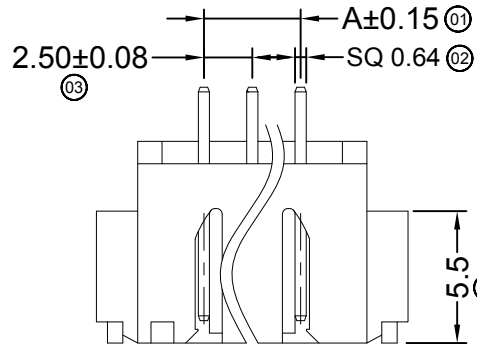
**SWB** 思索连接器有限公司  
TERMINAL&CONNECTORS SWB CONNECTORS CO.,LTD

PART NO. 8821WR-XXK-N0SN

TITLE 2.50mm Crimp style Connector

APPROVAL Jova  
CHECK W.X.T  
DRAWN Jova  
DATA 2007/05/03

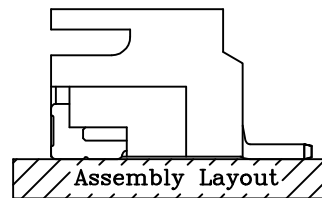
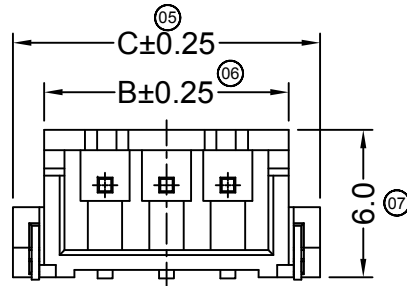
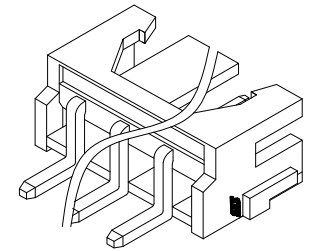
RoHS  Lead-free



2P

■ Specifications :

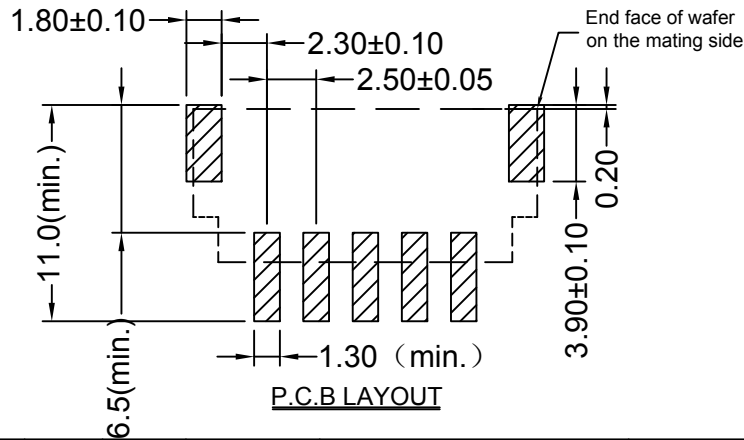
- Voltage rating: 250V AC / DC
- Current rating: 3A AC / DC
- Withstanding voltage: 1000V AC/minute
- Temperature range: -25°C~+85°C
- Insulation resistance: ≥1000MΩ
- Contact resistance: ≤10mΩ
- After environmental testing: ≤20mΩ



8821 W R S-XX X -9T SN XX  
 ① ② ③ ④ ⑤ ⑥ ⑦ ⑧ ⑨

- ① Series No.
- ② Category: W-WAFER
- ③ Welding Board Angle: V-180° ; R-90°
- ④ Welding Way: Blank-DIP ; S-SMT
- ⑤ Row No.-Pin No.: XX-Single Row ; 2\*XX-Double Row
- ⑥ Plug the Pin & Special No.: KS- With Kink and No Positioning
- ⑦ Material: 9T -PA9T 94V-0
- ⑧ Plating Category: G\*-Gold Plated Contact  
 V\*\*- All Gold-Plated  
 01-Gold Flash 02-2u" 03-3u"  
 05-5u" 10-10u" 15-15u"  
 SN-Bright Tin Plating (70-120u")  
 SN1-Bright Tin Plating (120u" Min).  
 0-No Plating Material  
 SW- Fog Tin Plating  
 HS-Hight temperature Tin
- ⑨ Color : Blank-Natural Color ;

Poles	Dimensions (mm)		
	A	B	C
02	2.50	7.45	10.00
03	5.00	9.95	12.50
04	7.50	12.45	15.00
05	10.00	14.95	17.50
06	12.50	17.45	20.00
07	15.00	19.95	22.50
08	17.50	22.45	25.00
09	20.00	24.95	27.50
10	22.50	27.45	30.00
11	25.00	29.95	32.50
12	27.50	32.45	35.00
13	30.00	34.95	37.50
14	32.50	37.45	40.00
15	35.00	39.95	42.50
16	37.50	42.45	45.00



8821WRS-XX-9TSN	Nylon 9T UL 94V-0	Brass	Tin-Plated	Brass	Tin-Plated	8821H	500Pcs
PART NO	Material	Material(Pin)	Finish(Pin)	Material (Solder Tabs)	Finish (Solder Tabs)	Mates With CSWB Housing	Q'ty/Reel

DATE	OLD REV	NEW REV	ECN	DESCRIPTION	CHECK	APPROVAL
2013/08/23	B	C		Modify drawing frame format	Jova	

GENERAL TOLERANCE  
 .X ±0.30  
 .XX ±0.20  
 .XXX ±0.10

PROJECT 

**SWB** 东莞市思索连接器有限公司  
 Terminal Connectors DongGuan Siweb Connectors CO.,LTD

APPROVAL CHECK DRAWN DATA

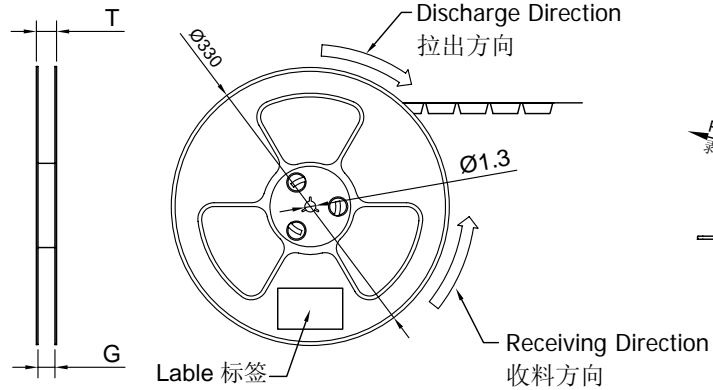
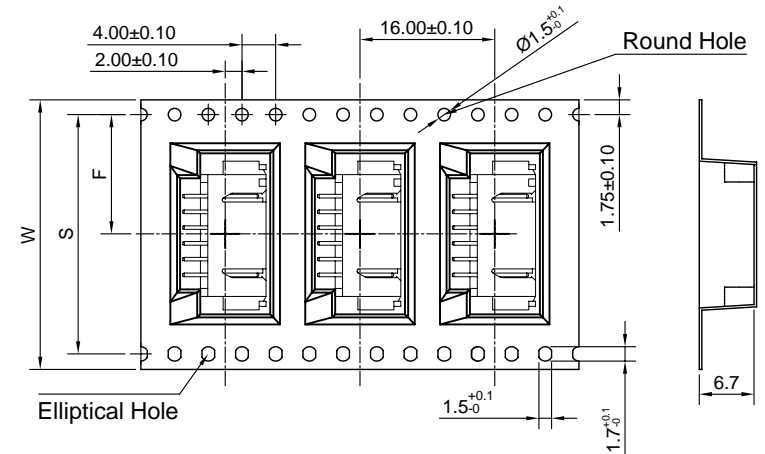
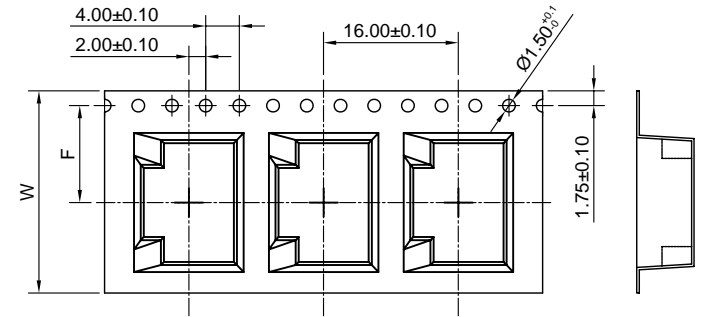
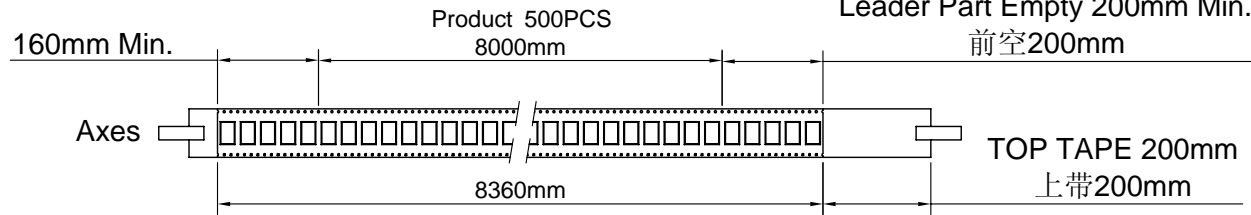
Jova 2007/05/03

PART NO. 8821WRS-XX-9TSN

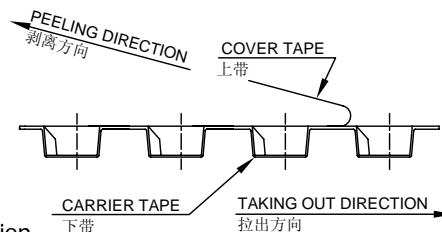
TITLE 2.50 mm Crimp style Connector

UNIT MM	SCALE 1:1	NUMBER A-106	REV B
---------	-----------	--------------	-------

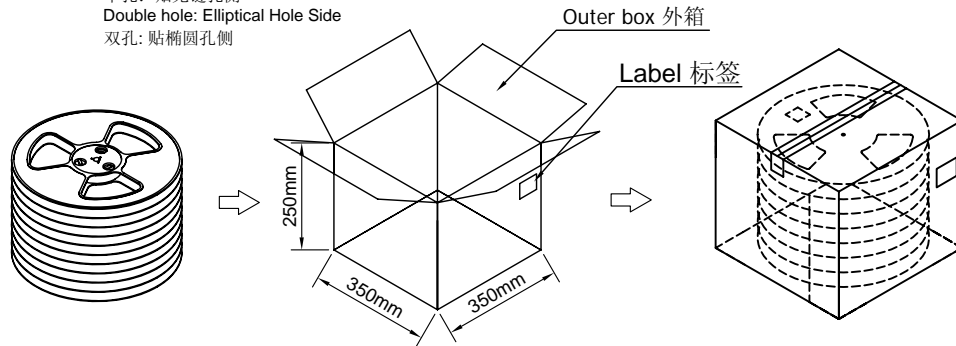
RoHS  Lead-free



COVER TAPE PEEL STRENGTH:20~120g  
上带剥离力量: 20~120g  
速度 PEEL SPEED:300mm/minute



Single hole: None Hole Side  
单孔: 贴无链孔侧  
Double hole: Elliptical Hole Side  
双孔: 贴椭圆孔侧



	Pin No.	W	S	F	T	G	REEL /PCS	CARTON /R	CARTON /PCS
ZD8821WRS-XX 8821WRS-XX-XXXX	ZD8821WRS-02	24	/	11.50	27.0	25.5	500	8	4000
	ZD8821WRS-03								
	ZD8821WRS-04	32	28.4	14.20	35.0	33.5	500	6	3000
	ZD8821WRS-05								
	ZD8821WRS-06								

Note:

- Carrier Camber Is Within 1mm In 100mm ; 带长100mm内容许弯曲度1mm
- 10 Sprocket Hole Pitch Cumulative Tolerance±0.2MM ; 圆孔十个孔距离累计允许公差为±0.2mm
- Material for PS Black ; 材质为PS材质 黑色
- Thickness=0.40±0.05 ; 材料厚度为0.40±0.05mm

DATE	OLD REV	NEW REV	ECN	DESCRIPTION	CHECK	APPROVAL	PROJECT	APPROVAL	CHECK	DRAWN	DATA	UNIT	SCALE	NUMBER	REV
										Allen	2013/12/09	MM	1:1	A-106	B

GENERAL TOLERANCE  
.X ±0.30  
.XX ±0.20  
.XXX ±0.10

**SWB**  
TERMINAL CONNECTORS

思索连接器有限公司  
SWB CONNECTORS CO.,LTD

PART NO. PPN: 8821WRS-XX-XXXX  
CPN: ZD8821WRS-XX

TITLE  
2.50mm Connectors 90° Package

APPROVAL CHECK DRAWN DATA

PROJECT

UNIT SCALE NUMBER REV  
MM 1:1 A-106 B