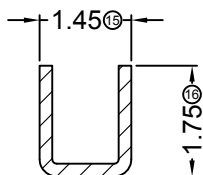
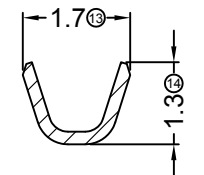
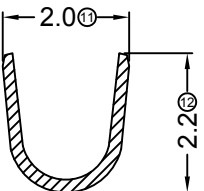
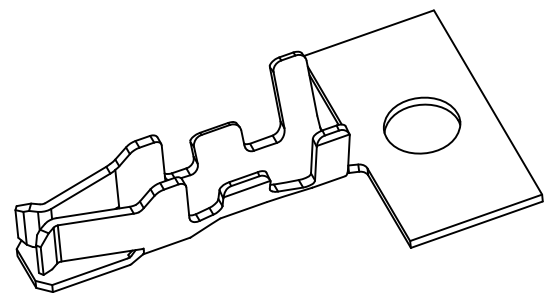


■ Specifications :

- Voltage rating: 250V AC / DC
- Current rating: 3A AC / DC
- Withstanding voltage: 1000V AC/minute
- Temperature range: -25°C~+85°C
- Insulation resistance: $\geq 1000M\Omega$
- Contact resistance: $\leq 30m\Omega$
- After environmental testing: $\leq 40m\Omega$

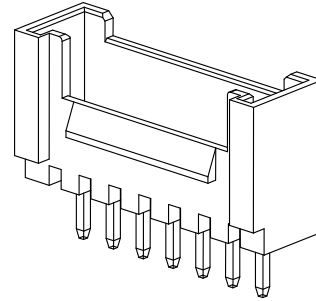
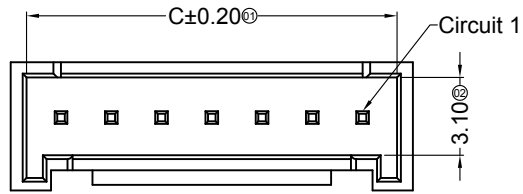
2011 T X-P SN X - A
 ① ② ③ ④ ⑤ ⑥ ⑦

- ① Series Number
- ② Category: T-terminal
- ③ Shape: Blank-ordinary
- ④ Material: P-Phosphor bronze
- ⑤ Plating style: SN-Bright tin plating
- ⑥ Plating method: Blank-Stamping before plating
- ⑦ Mold No./Mark/Special No. : A-Mating 2011-A HSG



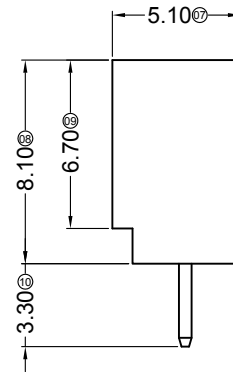
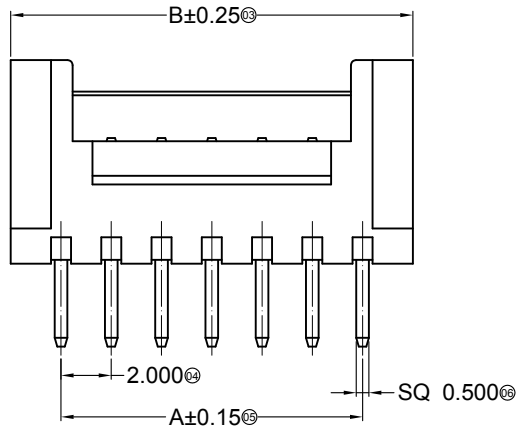
2011T-PSN-A	Phosphor Bronze	AWG#22-30	1.45mm(Max)	Stamping Before Plating;30u" MIN. Ni; 70u" MIN.Sn	2011H-A
PART NO	Material	Wire Range	Insulation O.D.	Finish	Used In SWB Housing

							GENERAL TOLERANCE .X ± 0.30 .XX ± 0.20 .XXX ± 0.10				SWB 思索连接器有限公司 TERMINAL&CONNECTORS SWB CONNECTORS CO.,LTD				PART NO. 2011T-PSN-A TITLE 2.00mm Crimp Style Connectors			
2014/08/12	A	B		Modify the drawing frame format	W.X.T	Jova	APPROVAL	CHECK	DRAWN	DATA	UNIT	SCALE	NUMBER	REV				
DATE	OLD REV	NEW REV	ECN	DESCRIPTION	CHECK	APPROVAL	PROJECT		Wuxiaotao	2014/08/12	MM	1:1	A-001	B				



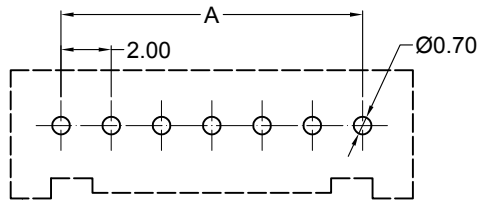
Specifications :

- Voltage rating: 250V AC / DC
- Current rating: 3A AC / DC
- Withstanding voltage: 1000V AC/minute
- Temperature range: -25°C~+85°C
- Insulation resistance: ≥1000MΩ
- Contact resistance: ≤30mΩ
- After environmental testing: ≤40mΩ



2011 W V X-XX A HF-N0 SN XX
① ② ③ ④ ⑤ ⑥ ⑦ ⑧ ⑨ ⑩

- ① Series No.
- ② Category: W-WAFER
- ③ Welding Board Angle: V-Straight 180°
- ④ Welding Way: Blank-DIP
- ⑤ Row No.-Pin No.: XX-02P~16P
- ⑥ Plug the Pin & Special No.: A-Without Baffle ;
- ⑦ HF-Halogen Free
- ⑧ Material: N0 -PA66 UL 94V-0
- ⑨ Plating Category: SN-Bright Tin Plating
- ⑩ Color : Blank-Natural Color

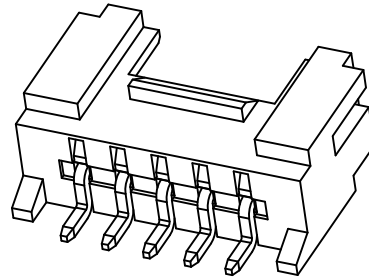
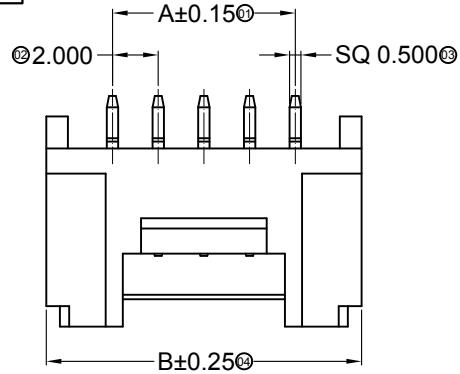


Recommended P.C.B Layout
General Tolerance±0.05

Poles	Dimensions (mm)			Poles	Dimensions (mm)		
	A	B	C		A	B	C
02	2.00	6.00	4.75	10	18.00	22.00	20.75
03	4.00	8.00	6.75	11	20.00	24.00	22.75
04	6.00	10.00	8.75	12	22.00	26.00	24.75
05	8.00	12.00	10.75	13	24.00	28.00	26.75
06	10.00	14.00	12.75	14	26.00	30.00	28.75
07	12.00	16.00	14.75	15	28.00	32.00	30.75
08	14.00	18.00	16.75	16	30.00	34.00	32.75
09	16.00	20.00	18.75				

2011WV-XXAHF-N0SN	PA 66 UL 94V-0 Halogen Free	Brass	Tin-Plated	2011H
2011WV-XXA-N0SN	PA 66 UL 94V-0			
PART NO	Material	Material(Pin)	Finish(Pin)	Mates With SWB Housing

							GENERAL TOLERANCE	SWB 思索连接器有限公司 TERMINAL & CONNECTORS SWB CONNECTORS CO.,LTD				PART NO. 2011WV-XXAXX-N0SN			
							.X ±0.30	APPROVAL	CHECK	DRAWN	DATA	TITLE 2.00mm Crimp Style Connector			
							.XX ±0.20	Jova Lau	W.X.T	Wuxiaotao	2014/08/16	UNIT	SCALE	NUMBER	REV
							.XXX ±0.10					MM	1 : 1	A-106	E
2014/08/16	D	E		Space of a Whole page Changes	W.X.T	Jova	PROJECT								
DATE	OLD REV	NEW REV	ECN	DESCRIPTION	CHECK	APPROVAL									

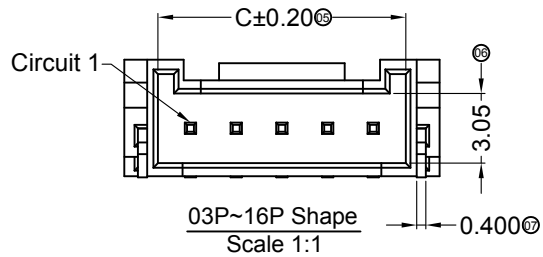
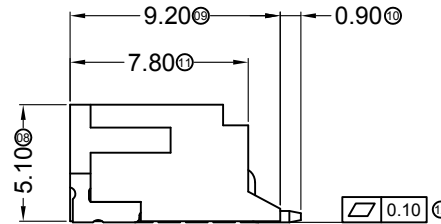


Specifications :

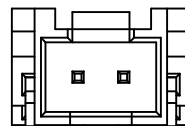
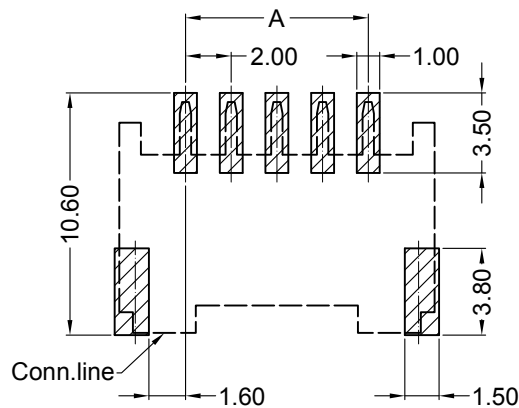
- Voltage rating: 250V AC / DC
- Current rating: 3A AC / DC
- Withstanding voltage: 1000V AC/minute
- Temperature range: -25°C~+85°C
- Insulation resistance: ≥1000MΩ
- Contact resistance: ≤30mΩ
- After environmental testing: ≤40mΩ

2011 W R S-XX A - LP SN XX
 ① ② ③ ④ ⑤ ⑥ ⑦ ⑧ ⑨

- ① Series No.
- ② Category: W-WAFER
- ③ Welding Board Angle: R-Right Angle 90°
- ④ Welding Way: S-SMT
- ⑤ Row No.-Pin No.: XX-02P~16P
- ⑥ Plug the Pin & Special No.: A-With Located Block
- ⑦ Material: LP -LCP UL 94V-0
- ⑧ Plating Category: SN-Bright Tin Plating
- ⑨ Color : Blank-Natural Color




Poles	Dimensions (mm)			Poles	Dimensions (mm)		
	A	B	C		A	B	C
02	2.00	7.80	4.85	10	18.00	23.80	20.85
03	4.00	9.80	6.85	11	20.00	25.80	22.85
04	6.00	11.80	8.85	12	22.00	27.80	24.85
05	8.00	13.80	10.85	13	24.00	29.80	26.85
06	10.00	15.80	12.85	14	26.00	31.80	28.85
07	12.00	17.80	14.85	15	28.00	33.80	30.85
08	14.00	19.80	16.85	16	30.00	35.80	32.85
09	16.00	21.80	18.85				



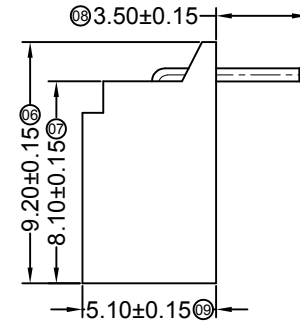
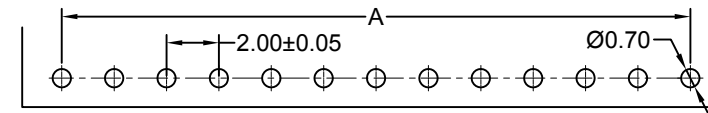
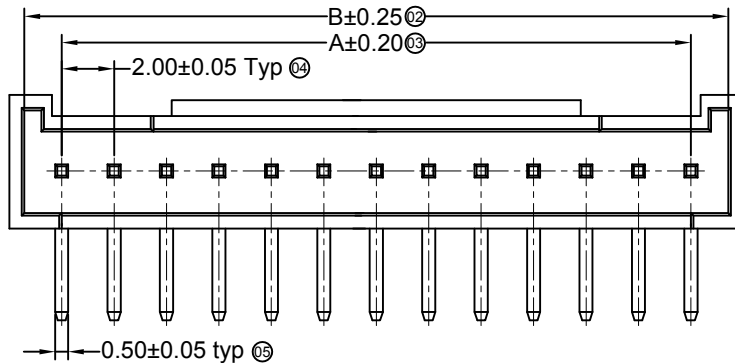
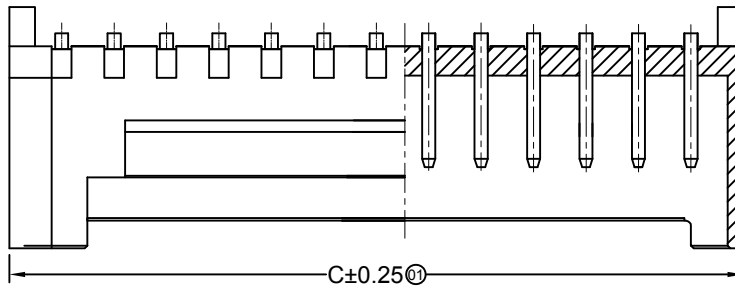
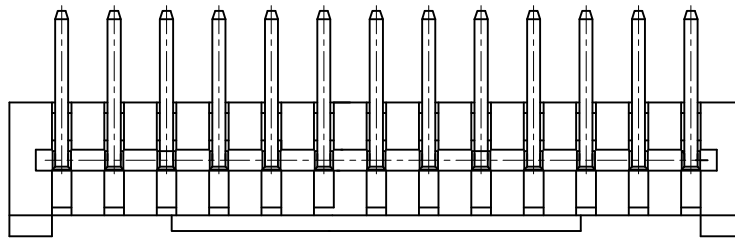
02P Shape
Scale 1:1

Recommended P.C.B Layout
General Tolerance±0.05

2011WRS-XXA-LPSN	LCP UL 94V-0	Brass	Phosphor Bronze	Tin-Plated	2011H-A
PART NO	Material	Material(Pin)	Material (Solder Tab)	Finish(Pin and Solder tab)	Mates With SWB Housing

							GENERAL TOLERANCE .X ±0.30 .XX ±0.20 .XXX ±0.10				SWB 思索连接器有限公司 SWB CONNECTORS CO.,LTD				PART NO. 2011WRS-XXA-LPSN			
2014/08/21 B C Space of a Whole page Changes W.X.T Jova							APPROVAL CHECK DRAWN DATA				TITLE 2.00mm Crimp Style Connector							
DATE	OLD REV	NEW REV	ECN	DESCRIPTION	CHECK	APPROVAL	PROJECT	Jova Lau	W.X.T	Wuxiaotao	2014/08/21	UNIT	SCALE	NUMBER	REV			
												MM	1:1	A-084	C			

RoHS  Lead-free



■ Specifications :

- Voltage rating: 250V AC / DC
- Current rating: 3A AC / DC
- Withstanding voltage: 1000V AC/minute
- Temperature range: -25°C~+85°C
- Insulation resistance: $\geq 1000M\Omega$
- Contact resistance: $\leq 30m\Omega$
- After environmental testing: $\leq 40m\Omega$

2011 W R X-XX A -N0 SN XX
 ① ② ③ ④ ⑤ ⑥ ⑦ ⑧ ⑨

- ① Series No.
- ② Category: W-WAFER
- ③ Welding Board Angle: R-90°
- ④ Welding Way: Blank-DIP
- ⑤ Row No.-Pin No.: XX-Single Row
- ⑥ Plug the Pin & Special No. :
A-With Located block
- ⑦ Material: N0 -PA66 94V-0
- ⑧ Plating Category:
SN-Bright Tin Plating (70-120u")
- ⑨ Color : Blank-Natural Color

Poles	Dimensions(mm)			Poles	Dimensions(mm)		
	A	B	C		A	B	C
02	2.00	4.75	6.00	10	18.00	20.75	22.00
03	4.00	6.75	8.00	11	20.00	22.75	24.00
04	6.00	8.75	10.00	12	22.00	24.75	26.00
05	8.00	10.75	12.00	13	24.00	26.75	28.00
06	10.00	12.75	14.00	14	26.00	28.75	30.00
07	12.00	14.75	16.00	15	28.00	30.75	32.00
08	14.00	16.75	18.00	16	30.00	32.75	34.00
09	16.00	18.75	20.00				

2011WR-XXA-N0SN	Nylon 66 UL 94V-0	Brass	Tin-Plated	2011H
PART NO	Material	Material(Pin)	Finish(Pin)	Mates With SWB Housing

DATE	OLD REV	NEW REV	ECN	DESCRIPTION	CHECK	APPROVAL	PROJECT

GENERAL TOLERANCE
 .X ± 0.30
 .XX ± 0.20
 .XXX ± 0.10

SWB 思索连接器有限公司
 Terminal & Connectors SWB CONNECTORS CO., LTD

APPROVAL	CHECK	DRAWN	DATA

PROJECT: sylvia, 2014/04/01

PART NO. 2011WR-XXA-N0SN

TITLE 2.00 mm Crimp Style Connectors

UNIT	SCALE	NUMBER	REV
MM	1:1	A-010	A