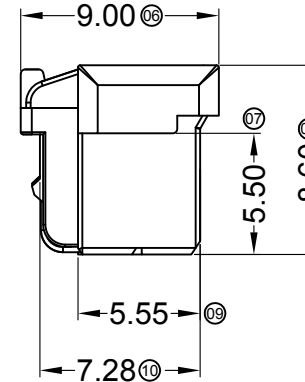
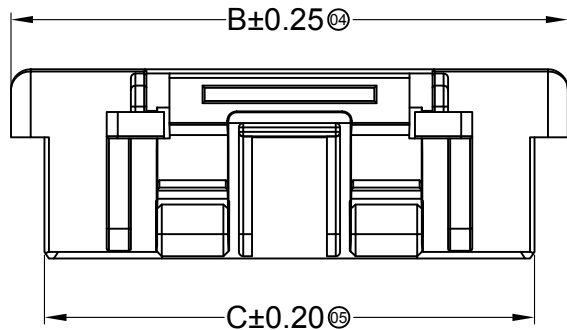


■ Specifications :

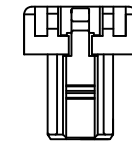
- Voltage rating: 100V AC / DC
- Current rating: 2A AC / DC
- Withstanding voltage: 500V AC/minute
- Temperature range: $-40^{\circ}\text{C} \sim +85^{\circ}\text{C}$
- Insulation resistance: $\geq 500\text{M}\Omega$
- Contact resistance: $\leq 20\text{m}\Omega$
- After environmental testing: $\leq 40\text{m}\Omega$

1515 H X-2*XX X-PT XX
 ① ② ③ ④ ⑤ ⑥ ⑦

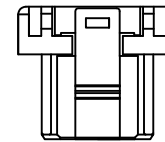
- ① Series No.
- ② Category: H-HSG
- ③ Appearance type: Blank-Ordinary
- ④ Row No.-Pin No.: 2*XX-2*02~2*15P
- ⑤ Plug the Pin & Special No. Blank-Ordinary
- ⑥ Material : PT-PBT 94V-0
- ⑦ Color: Blank-Natural Color



2*06P~2*15P Shape
Scale 1:1



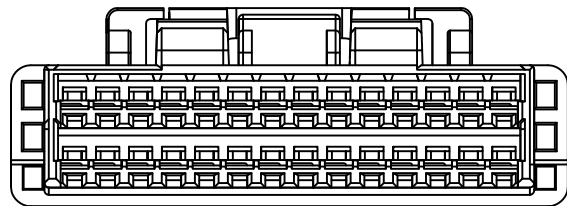
2*02P~2*03P Shape
Scale 1:0.7



2*04P~2*05P Shape
Scale 1:0.7

Poles	Dimensions (mm)			Poles	Dimensions (mm)		
	A	B	C		A	B	C
2*02	1.50	7.30	4.25	2*09	12.00	17.80	14.75
2*03	3.00	8.80	5.75	2*10	13.50	19.30	16.25
2*04	4.50	10.30	7.25	2*11	15.00	20.80	17.75
2*05	6.00	11.80	8.75	2*12	16.50	22.30	19.25
2*06	7.50	13.30	10.25	2*13	18.00	23.80	20.75
2*07	9.00	14.80	11.75	2*14	19.50	25.30	22.25
2*08	10.50	16.30	13.25	2*15	21.00	26.80	23.75

1515H-2*XX-PT	PBT UL 94V-0	1515T	1515W
PART NO	Material	Suitable SWB Terminal	Mates With SWB Wafer



GENERAL TOLERANCE
 .X ± 0.30
 .XX ± 0.20
 .XXX ± 0.10

SWB 思索连接器有限公司
 TERMINALS & CONNECTORS SWB CONNECTORS CO.,LTD

PART NO. 1515H-2*XX-PT
 TITLE 1.50mm Crimp Style Connectors

PROJECT

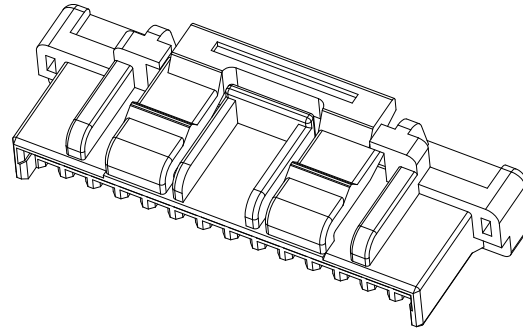
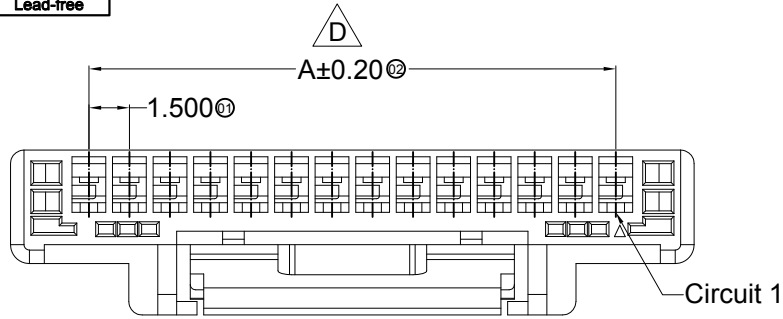
APPROVAL Jova Lau CHECK W.X.T DRAWN wu xiao tao DATA 2014/03/27

UNIT MM SCALE 1:1 NUMBER A-106 REV A

DATE OLD REV NEW REV ECN DESCRIPTION CHECK APPROVAL

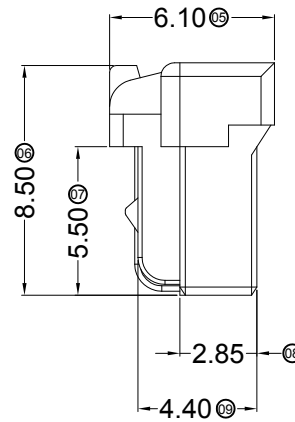
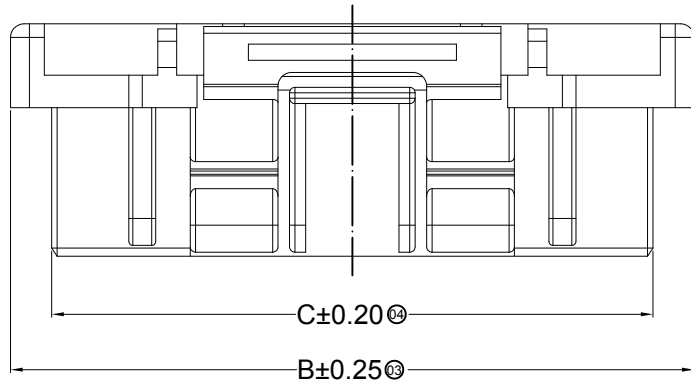
1 2 3 4 5 6 7 8

RoHS  Lead-free



■ Specifications :

- Voltage rating: 100V AC / DC
- Current rating: 2A AC / DC
- Withstanding voltage: 500V AC/minute
- Temperature range: -40°C~+85°C
- Insulation resistance: ≥500MΩ
- Contact resistance: ≤20mΩ
- After environmental testing: ≤40mΩ

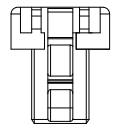
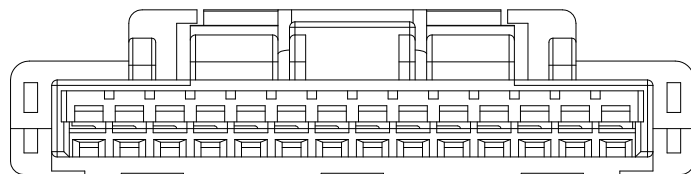


1515 H X-XX X-PT XX

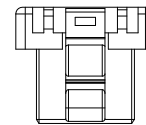
① ② ③ ④ ⑤ ⑥ ⑦

- ① Series No.
- ② Category: H-HSG
- ③ Appearance type: Blank-ordinary
- ④ Row No.-Pin No.: XX-02P~15P
- ⑤ Plug the Pin & special No.: Blank-Ordinary
- ⑥ Material: PT-PBT 94V-0
- ⑦ Color: Blank-Natural Color

02P~03P Shape Scale 1:1



02P~03P Shape Scale 1:2



04P~05P Shape Scale 1:2

Poles	Dimensions (mm)			Poles	Dimensions (mm)		
	A	B	C		A	B	C
02	1.50	7.30	4.25	09	12.00	17.80	14.75
03	3.00	8.80	5.75	10	13.50	19.30	16.25
04	4.50	10.30	7.25	11	15.00	20.80	17.75
05	6.00	11.80	8.75	12	16.50	22.30	19.25
06	7.50	13.30	10.25	13	18.00	23.80	20.75
07	9.00	14.80	11.75	14	19.50	25.30	22.25
08	10.50	16.30	13.25	15	21.00	26.80	23.75

1515H-XX-PT	PBT UL 94V-0	1515T	1515W
PART NO	Material	Suitable SWB Terminal	Mates With SWB Wafer

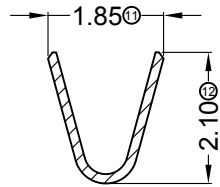
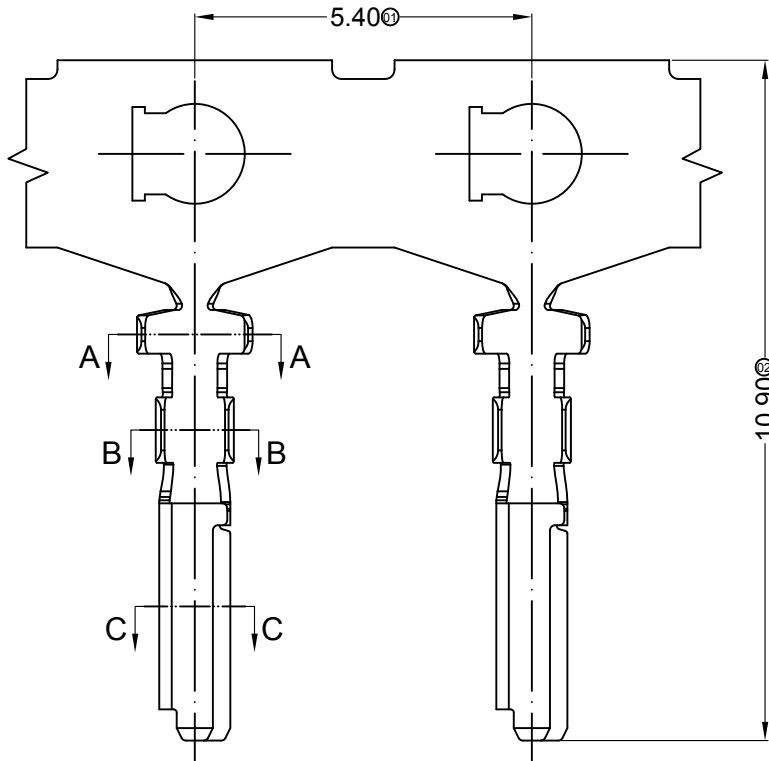
DATE	OLD REV	NEW REV	ECN	DESCRIPTION	CHECK	APPROVAL	PROJECT	APPROVAL	CHECK	DRAWN	DATA	UNIT	SCALE	NUMBER	REV
2014/06/03	C	D		Change DIM Tolerance	Jova		GENERAL TOLERANCE					MM	1:1	A-106	D
2014/06/03	C	D		Space of a Whole page Changes	Jova	Bob	.X ±0.30								
							.XX ±0.20								
							.XXX ±0.10								

SWB 思索连接器有限公司
TERMINAL & CONNECTORS SWB CONNECTORS CO.,LTD

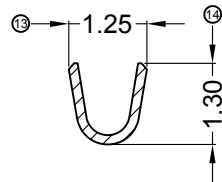
PART NO. 1515H-XX-PT

TITLE 1.50mm Crimp Style Connectors

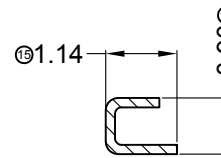
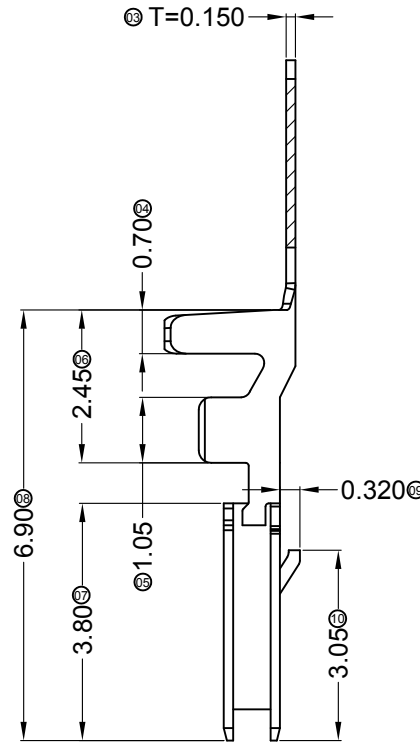
APPROVAL Bob Sun CHECK Jova Lau DRAWN Wuxiaotao DATA 2014/06/03



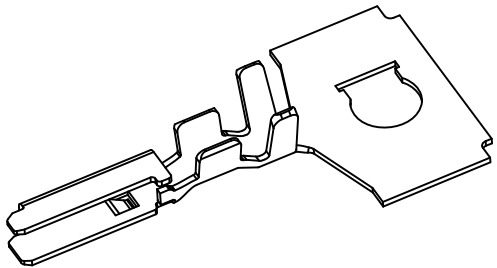
SECTION: A-A
SCALE: 1:1



SECTION: B-B
SCALE: 1:1



SECTION: C-C
SCALE: 1:1



■ Specifications :

- Voltage rating: 100V AC / DC
- Current rating: 2A AC / DC
- Withstanding voltage: 500V AC/minute
- Temperature range: -40°C~+85°C
- Insulation resistance: ≥500MΩ
- Contact resistance: ≤20mΩ
- After environmental testing: ≤40mΩ

1515 T X-P SN X - X
① ② ③ ④ ⑤ ⑥ ⑦

- ① Series Number
- ② Category: T-terminal
- ③ Shape: Blank-ordinary
- ④ Material: P-Phosphor bronze
- ⑤ Plating style: SN-Bright tin plating
- ⑥ Plating method: Blank-Stamping before plating
- ⑦ Mold No./Mark/Special No.

1515T-PSN	Phosphor Bronze	AWG#24-28	1.28mm(Max)	Stamping Before Plating:30u"MIN. Ni; 70u"Sn	1515H
PART NO	Material	Wire Range	Insulation O.D.	Finish	Used In SWB Housing

2014/06/05	A	B		Modify the drawing frame format	Jova	Bob
DATE	OLD REV	NEW REV	ECN	DESCRIPTION	CHECK	APPROVAL

GENERAL TOLERANCE

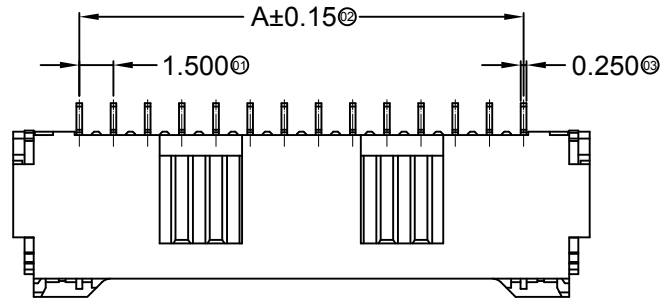
.X	±0.30
.XX	±0.20
.XXX	±0.10

SWB 思索连接器有限公司
TERMINAL&CONNECTORS SWB CONNECTORS CO.,LTD

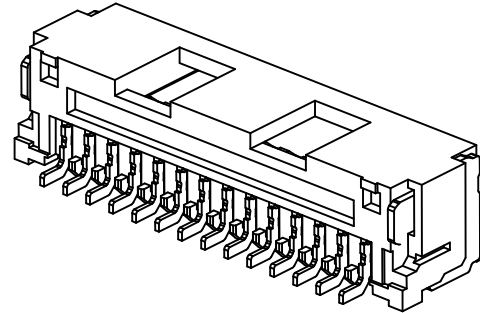
PART NO. 1515T-PSN			
TITLE 1.50mm Crimp Style Connectors			
UNIT MM	SCALE 1:1	NUMBER A-106	REV B

APPROVAL	CHECK	DRAWN	DATA
Bob Sun	Jova Lau	Wuxiaotao	2014/06/05





06P-15P Double Hole
Scale 1:1

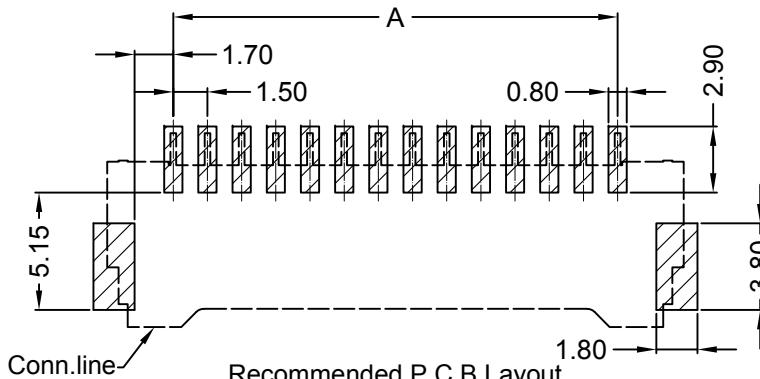
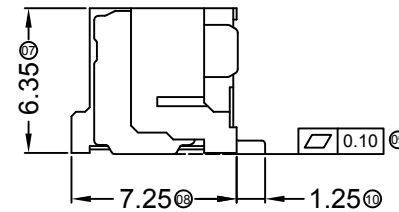
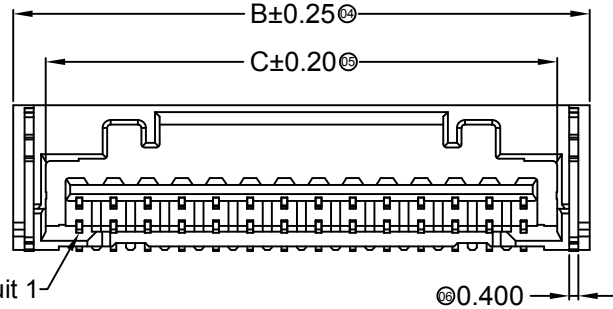


■ Specifications :

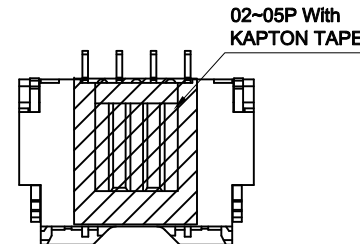
- Voltage rating: 100V AC / DC
- Current rating: 2A AC / DC
- Withstanding voltage: 500V AC/minute
- Temperature range: -40°C~+85°C
- Insulation resistance: ≥500MΩ
- Contact resistance: ≤20mΩ
- After environmental testing: ≤40mΩ

1515 W R S-XX X- LP SW XX
① ② ③ ④ ⑤ ⑥ ⑦ ⑧ ⑨

- ① Series No.
- ② Category: W-wafer
- ③ Welding Board Angle: R- Right angle 90°
- ④ Welding Way: S-SMT
- ⑤ Row No.-Pin No.: XX-02P~15P
- ⑥ Plug the Pin & Special No.:
- ⑦ Material: LP -LCP 94V-0 ;
- ⑧ Planting Category: SW- Matte Tin Plating
- ⑨ Color: Blank-Natural Color



Recommended P.C.B Layout
General Tolerance±0.05



02P-05P Single Hole
Scale 1:1

Poles	Dimensions (mm)			Poles	Dimensions (mm)		
	A	B	C		A	B	C
02	1.50	7.30	4.45	09	12.00	17.80	14.95
03	3.00	8.80	5.95	10	13.50	19.30	16.45
04	4.50	10.30	7.45	11	15.00	20.80	17.95
05	6.00	11.80	8.95	12	16.50	22.30	19.45
06	7.50	13.30	10.45	13	18.00	23.80	20.95
07	9.00	14.80	11.95	14	19.50	25.30	22.45
08	10.50	16.30	13.45	15	21.00	26.80	23.95

1515WRS-XX-LPSW	LCP UL 94V-0	Phosphor Bronze	Brass	Matte Tin-Plated	1515H
PART NO	Material	Material(Pin)	Material (Solder Tabs)	Finish (Pin And Solder Tabs)	Mates With SWB Housing

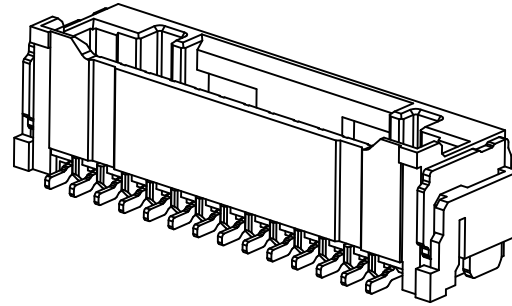
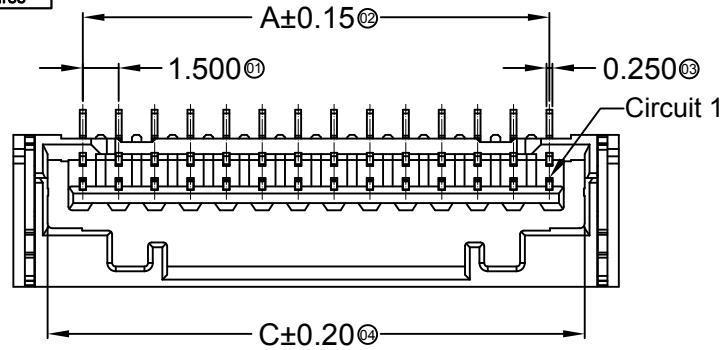
DATE	OLD REV	NEW REV	ECN	DESCRIPTION	CHECK	APPROVAL	PROJECT
2014/06/24	D	E		Space of a Whole page Changes	Wuxiaotao	Jova	GENERAL TOLERANCE .X ±0.30 .XX ±0.20 .XXX ±0.10
2013/12/11	C	D		Add KAPTON TAPE	Jova	Bob	

SWB 思索连接器有限公司
TERMINAL & CONNECTORS SWB CONNECTORS CO.,LTD

APPROVAL	CHECK	DRAWN	DATA
Success	Sun Kaibao	Jova	2012/08/13

PART NO. 1515WRS-XX-LPSW			
TITLE 1.50mm Crimp Style Connectors			
UNIT MM	SCALE 1:1	NUMBER A-106	REV E

RoHS  Lead-free



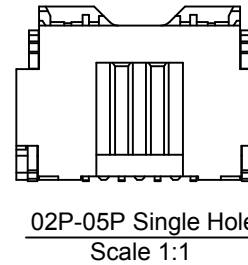
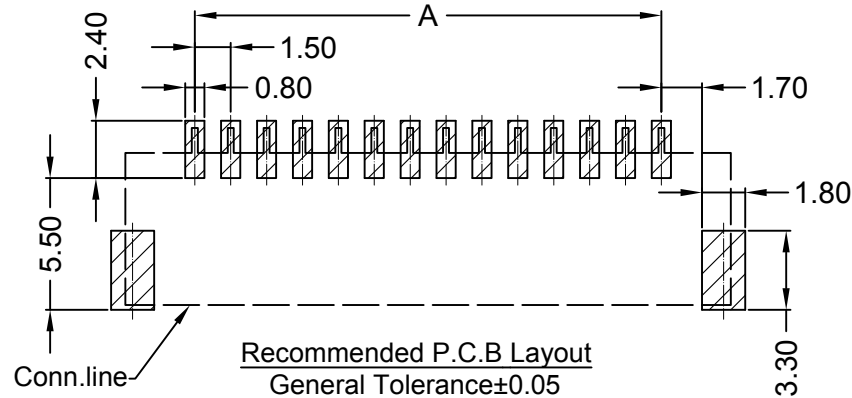
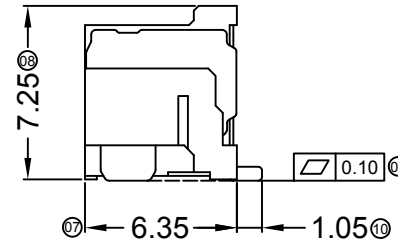
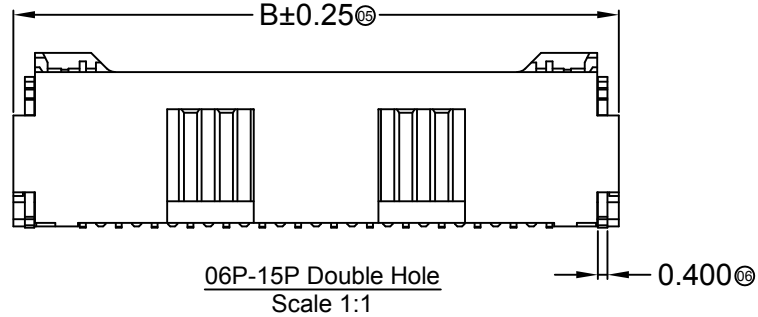
■ Specifications :

- Voltage rating: 100V AC / DC
- Current rating: 2A AC / DC
- Withstanding voltage: 500V AC/minute
- Temperature range: -40°C~+85°C
- Insulation resistance: ≥500MΩ
- Contact resistance: ≤20mΩ
- After environmental testing: ≤40mΩ

1515 W V S-XX X- LP SW XX

① ② ③ ④ ⑤ ⑥ ⑦ ⑧ ⑨

- ① Series No.
- ② Category: W-wafer
- ③ Welding Board Angle: V- Straight 180°
- ④ Welding Way: S-SMT
- ⑤ Row No.-Pin No.: XX-02P~15P
- ⑥ Plug the Pin & Special No.:
- ⑦ Material: LP-LCP 94V-0 ;
- ⑧ Planting Category: SW- Matte Tin Plating
- ⑨ Color: Blank-Natural Color




Poles	Dimensions (mm)			Poles	Dimensions (mm)		
	A	B	C		A	B	C
02	1.50	7.30	4.45	09	12.00	17.80	14.95
03	3.00	8.80	5.95	10	13.50	19.30	16.45
04	4.50	10.30	7.45	11	15.00	20.80	17.95
05	6.00	11.80	8.95	12	16.50	22.30	19.45
06	7.50	13.30	10.45	13	18.00	23.80	20.95
07	9.00	14.80	11.95	14	19.50	25.30	22.45
08	10.50	16.30	13.45	15	21.00	26.80	23.95

1515WVS-XX-LPSW	LCP UL 94V-0	Phosphor Bronze	Brass	Matte Tin-Plated	1515H
PART NO	Material	Material(Pin)	Material (Solder Tabs)	Finish (Pin And Solder Tabs)	Mates With SWB Housing

2014/06/07	D	E	Space of a Whole page Changes	Jova	Bob	
DATE	OLD REV	NEW REV	ECN	DESCRIPTION	CHECK	APPROVAL

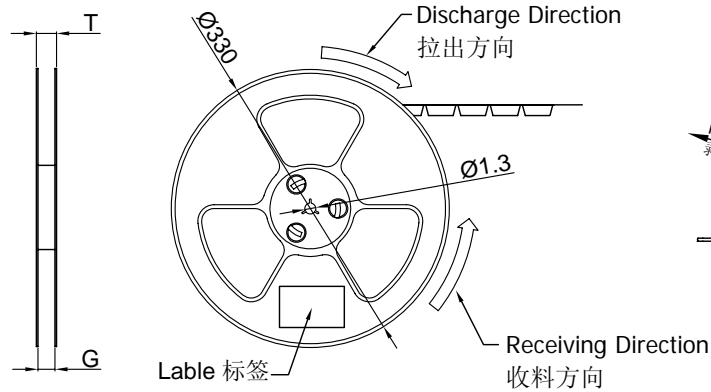
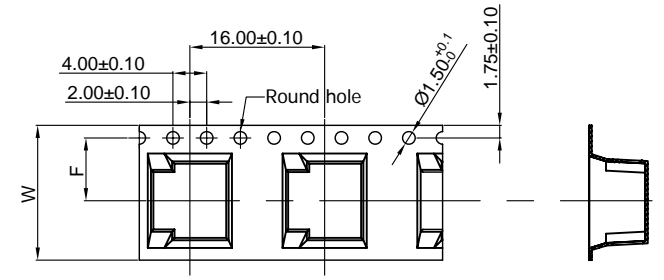
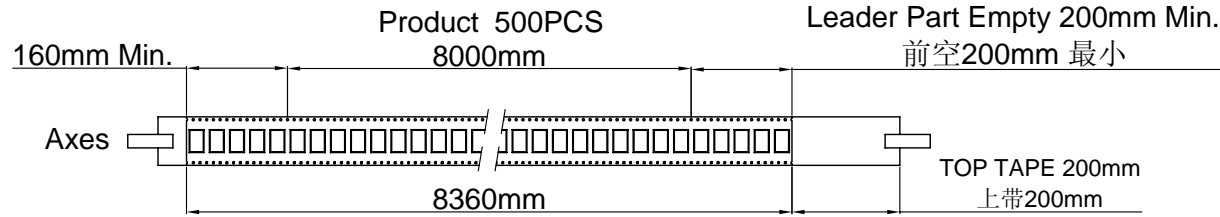
GENERAL TOLERANCE
.X ±0.30
.XX ±0.20
.XXX ±0.10

PROJECT 

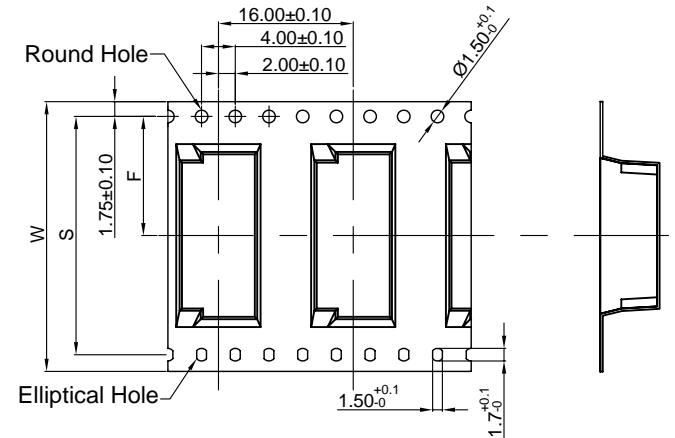
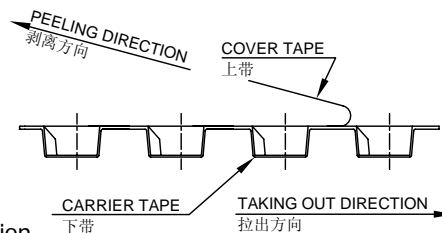
SWB 思索连接器有限公司
TERMINAL & CONNECTORS SWB CONNECTORS CO.,LTD

PART NO. 1515WVS-XX-LPSW			
TITLE 1.50mm Crimp Style Connectors			
UNIT MM	SCALE 1:1	NUMBER A-106	REV E

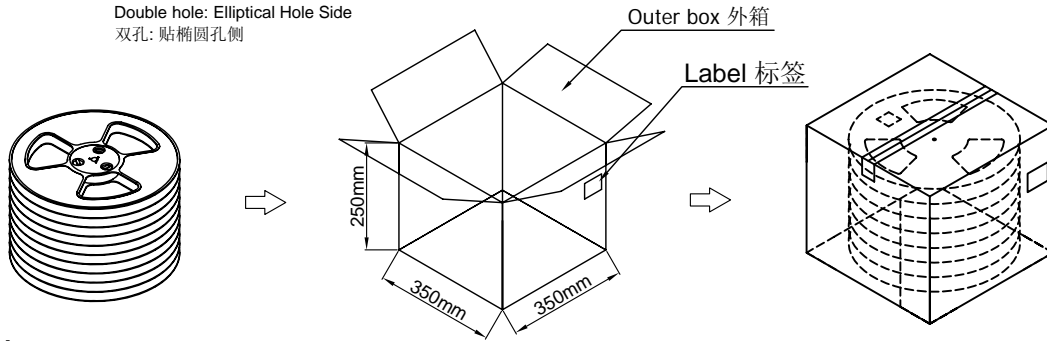
APPROVAL	CHECK	DRAWN	DATA
Bob Sun	Jova Lau	Wuxiaotao	2014/06/07



COVER TAPE PEEL STRENGTH:20~120g
上带剥离力量: 20~120g
速度 PEEL SPEED:300mm/minute



Single hole: None Hole Side
单孔: 贴无键孔侧
Double hole: Elliptical Hole Side
双孔: 贴椭圆孔侧



Note:

- Carrier Camber Is Within 1mm In 100mm ; 带长100mm内容许弯曲度1mm
- 10 Sprocket Hole Pitch Cumulative Tolerance±0.2MM ; 圆孔十个孔距离累计允许公差为±0.2mm
- Materiaal for PS ; 材质为PS材质
- Thinkess=0.40±0.05 ; 材料厚度为0.40±0.05mm

	Pin No.	W	S	F	T	G	REEL /PCS	CARTON /R	CARTON /PCS
ZD1515WRS-XX 1515WRS-XX-LPSW	ZD1515WRS-02	24	/	11.50	28.50	24.40	500	8R	4000
	ZD1515WRS-03								
	ZD1515WRS-04								
	ZD1515WRS-05								
	ZD1515WRS-06	32	28.40	14.20	36.50	32.40	500	6R	3000
	ZD1515WRS-07								
	ZD1515WRS-08								
	ZD1515WRS-09								
	ZD1515WRS-10	44	40.40	20.20	48.50	44.40	500	5R	2500
	ZD1515WRS-11								
	ZD1515WRS-12								
	ZD1515WRS-13								
	ZD1515WRS-14								
	ZD1515WRS-15								

GENERAL TOLERANCE	
.X	±0.30
.XX	±0.20
.XXX	±0.10

SWB 思索连接器有限公司
TERMINAL & CONNECTORS SWB CONNECTORS CO.,LTD

PART NO.: PPN: 1515WRS-XX-LPSW
CPN: ZD1515WRS-XXX

TITLE: 1.50mm SMT 90° Package

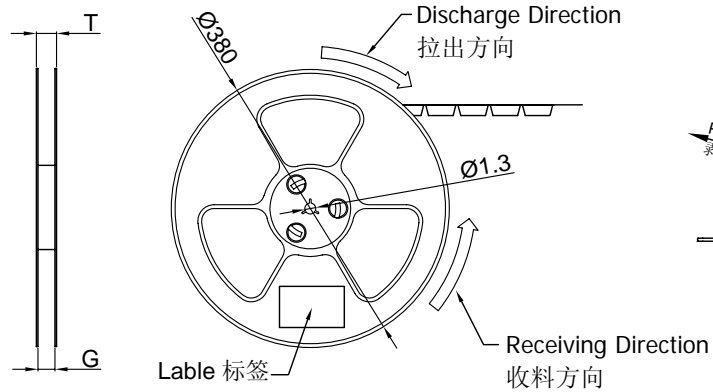
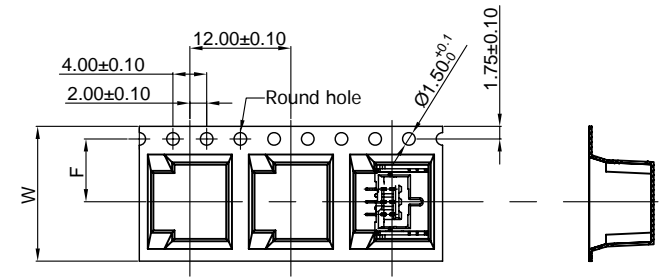
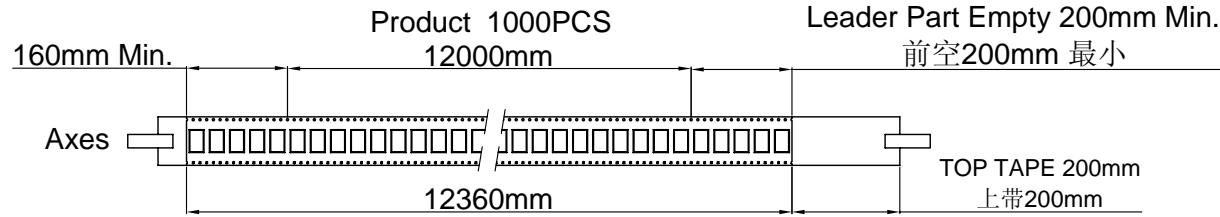
DATE	OLD REV	NEW REV	ECN	DESCRIPTION	CHECK	APPROVAL

PROJECT	

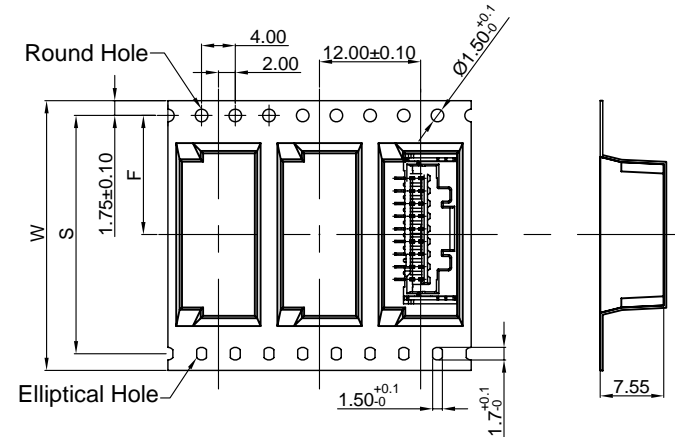
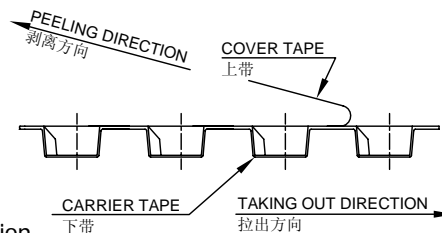
APPROVAL CHECK DRAWN DATA

Allen Pan 2013/12/09

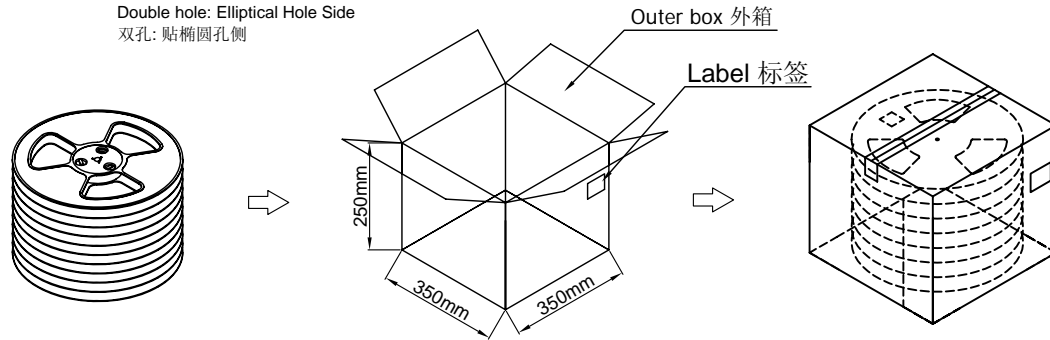
UNIT	SCALE	NUMBER	REV
MM	1:1	A-106	A



COVER TAPE PEEL STRENGTH:20~120g
上带剥离力量: 20~120g
速度 PEEL SPEED:300mm/minute



Single hole: None Hole Side
单孔: 贴无键孔侧
Double hole: Elliptical Hole Side
双孔: 贴椭圆孔侧



Note:

- Carrier Camber Is Within 1mm In 100mm ; 带长100mm内容许弯曲度1mm
- 10 Sprocket Hole Pitch Cumulative Tolerance±0.2MM ; 圆孔十个孔距离累计允许公差为±0.2mm
- Materiaal for PS ; 材质为PS材质
- Thinkess=0.40±0.05 ; 材料厚度为0.40±0.05mm

	Pin No.	W	S	F	T	G	REEL /PCS	CARTON /R	CARTON /PCS
ZD1515WVS-XX 1515WVS-XX-LPSW	ZD1515WVS-02	24	/	11.50	28.50	24.40	1000	8R	8000
	ZD1515WVS-03								
	ZD1515WVS-04								
	ZD1515WVS-05								
	ZD1515WVS-06	32	28.40	14.20	36.50	32.40	1000	6R	6000
	ZD1515WVS-07								
	ZD1515WVS-08								
	ZD1515WVS-09								
	ZD1515WVS-10	44	40.40	20.20	48.50	44.40	1000	5R	5000
	ZD1515WVS-11								
	ZD1515WVS-12								
	ZD1515WVS-13								
	ZD1515WVS-14								
	ZD1515WVS-15								

GENERAL TOLERANCE	
.X	±0.30
.XX	±0.20
.XXX	±0.10

SWB 思索连接器有限公司
TERMINAL & CONNECTORS SWB CONNECTORS CO.,LTD

PART NO.: PPN: 1515WVS-XX-LPSW
CPN: ZD1515WVS-XX

TITLE: 1.50mm SMT 180° Package

DATE	OLD REV	NEW REV	ECN	DESCRIPTION	CHECK	APPROVAL

PROJECT	

APPROVAL CHECK DRAWN DATA

Allen Pan 2013/12/09

UNIT	SCALE	NUMBER	REV
MM	1:1	A-106	A