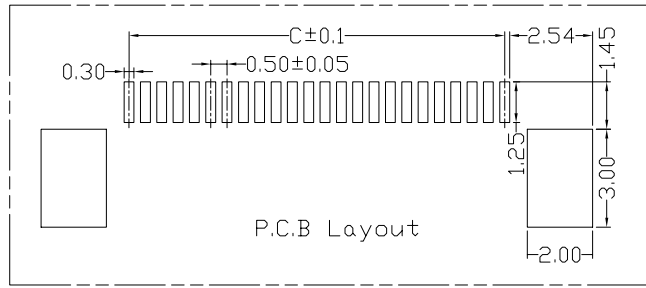


环保物料

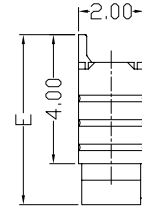
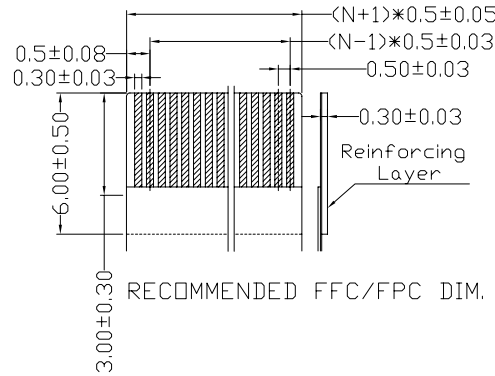
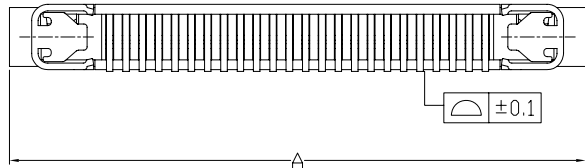
Poles	Dimensions (mm)				
	A	B	C	D	E
4	7.60	6.50	1.50	2.60	
5	8.10	7.00	2.00	3.10	
6	8.60	7.50	2.50	3.60	
7	9.10	8.00	3.00	4.10	
8	9.60	8.50	3.50	4.60	
9	10.10	9.00	4.00	5.10	
10	10.60	9.50	4.50	5.60	
11	11.10	10.00	5.00	6.10	
12	11.60	10.50	5.50	6.60	
13	12.10	11.00	6.00	7.10	
14	12.60	11.50	6.50	7.60	
15	13.10	12.00	7.00	8.10	
16	13.60	12.50	7.50	8.60	5.20
17	14.10	13.00	8.00	9.10	
18	14.60	13.50	8.50	9.60	
19	15.10	14.00	9.00	10.10	
20	15.60	14.50	9.50	10.60	
21	16.10	15.00	10.00	11.10	
22	16.60	15.50	10.50	11.60	
23	17.10	16.00	11.00	12.10	
24	17.60	16.50	11.50	12.60	
25	18.10	17.00	12.00	13.10	
26	18.60	17.50	12.50	13.60	
27	19.10	18.00	13.00	14.10	
28	19.60	18.50	13.50	14.60	
29	20.10	19.00	14.00	15.10	
30	20.60	19.50	14.50	15.60	
31	21.10	20.00	15.00	16.10	
32	21.60	20.50	15.50	16.60	
33	22.10	21.00	16.00	17.10	
34	22.60	21.50	16.50	17.60	
35	23.10	22.00	17.00	18.10	
36	23.60	22.50	17.50	18.60	
37	24.10	23.00	18.00	19.10	
38	24.60	23.50	18.50	19.60	
39	25.10	24.00	19.00	20.10	
40	25.60	24.50	19.50	20.60	
41	26.10	25.00	20.00	21.10	
42	26.60	25.50	20.50	21.60	
43	27.10	26.00	21.00	22.10	
44	27.60	26.50	21.50	22.60	
45	28.10	27.00	22.00	23.10	
46	28.60	27.50	22.50	23.60	5.70
47	29.10	28.00	23.00	24.10	
48	29.60	28.50	23.50	24.60	
49	30.10	29.00	24.00	25.10	
50	30.60	29.50	24.50	25.60	
51	31.10	30.00	25.00	26.10	
52	31.60	30.50	25.50	26.60	
53	32.10	31.00	26.00	27.10	
54	32.60	31.50	26.50	27.60	
55	33.10	32.00	27.00	28.10	
56	33.60	32.50	27.50	28.60	
57	34.10	33.00	28.00	29.10	
58	34.60	33.50	28.50	29.60	
59	35.10	34.00	29.00	30.10	
60	35.60	34.50	29.50	30.60	

■ Specifications(规格):

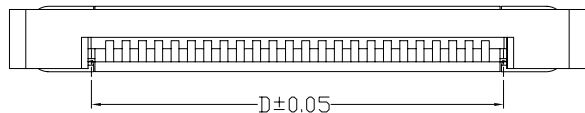
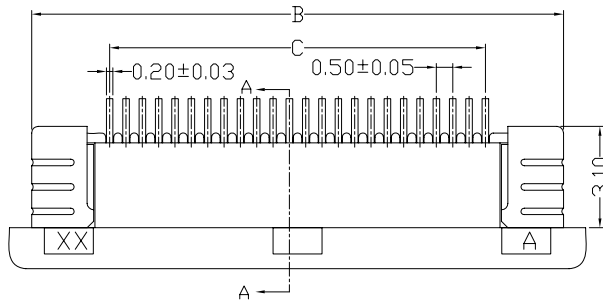
- Voltage rating(额定电压): 50V AC / DC
- Current rating(额定电流): 0.4A AC / DC
- Withstanding voltage(耐压值): 200V AC/minute
- Temperature range(工作温度): -25°C~+85°C
- Insulation resistance(绝缘电阻) ≥500MΩ
- Contact resistance(接触电阻): ≤20mΩ
- After environmental testing(环境测试后): ≤40mΩ



P.C.B Layout



SECTION A-A



0505WRS-XXP-LPSN	LCP UL 94V-0	LCP UL 94V-0	Phosphor Bronze	Brass	1,000Pcs
PART NO	Material(Housing)	Material(Slider)	Material(Contacts)	Material(Fixed Tabs)	Q' ty/Bag

0505 W R S-XX P-LP SN XX
① ② ③ ④ ⑤ ⑥ ⑦ ⑧ ⑨

- ① 系列
- ② 类别: W-WAFER类
- ③ 外观形态:
R-90° (带脚式)
- ④ 成型方式:
S-SMT
- ⑤ PIN数:
单排-XX
- ⑥ 空PIN位置及特殊码
P-FPC型, 抽屉式上接
- ⑦ 材质:
LP-LCP 94V-0 94V-2
- ⑧ 电镀类别: G**-镀金 V**-镀全金
*01-1U" *02-2U" *03-3U" *05-5U"
*10-10U" *15-15U" *30-30U" *50-50U"
SN-镀亮锡(70-120U") SN1-镀亮锡(120U"Min.)
SW-镀雾锡 HS-高温锡
- ⑨ 颜色:
空码-本色或普通色

				一般公差 GENERAL TOLERANCE				料号 PART NO 0505WRS-XXP-LPSN				
				.X ±0.3				品名 TITLE 0.50 mm Crimp Style connectors				
				.XX ±0.2				核准 APPD 审核 CHK 绘图 DR 日期 DATA				
				.XXX ±0.1				刘艳 2007/05/03				
日期 DATE	旧版次 OLD REV	新版次 NEW REV	变更内容 DESCRIPTION	审核 CHK	核准 APPD	角法 PROJECT	CSWB 东莞市思索连接器有限公司 TERMINAL&CONNECTORS Dongguan Siweb Connectors CO.,LTD		单位 UNIT	比例 SCALE	图号 NUMBER	版次 REV
1			2	3	4	5	6	7	MM	1/1	A-055	A