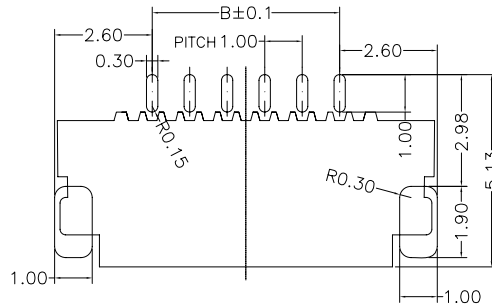
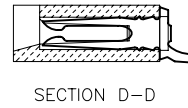
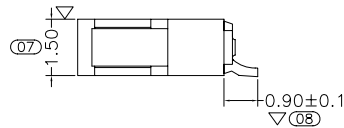
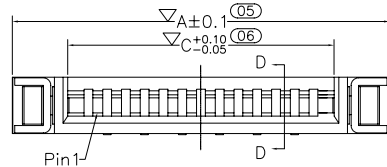
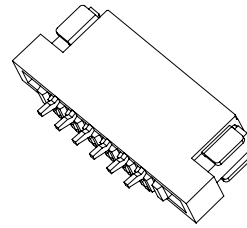
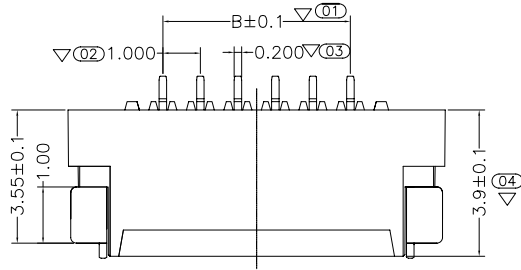
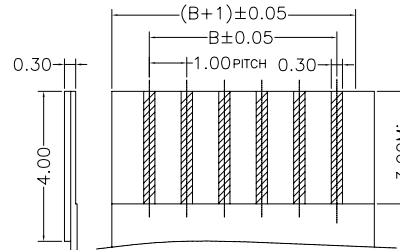


环保物料

Poles	Dimensions (mm)			Poles	Dimensions (mm)		
	A	B	C		A	B	C
4	8.03	3.00	5.07	18	22.03	17.00	19.07
5	9.03	4.00	6.07	19	23.03	18.00	20.07
6	10.03	5.00	7.07	20	24.03	19.00	21.07
7	11.03	6.00	8.07	21	25.03	20.00	22.07
8	12.03	7.00	9.07	22	26.03	21.00	23.07
9	13.03	8.00	10.07	23	27.03	22.00	24.07
10	14.03	9.00	11.07	24	28.03	23.00	25.07
11	15.03	10.00	12.07	25	29.03	24.00	26.07
12	16.03	11.00	13.07	26	30.03	25.00	27.07
13	17.03	12.00	14.07	27	31.03	26.00	28.07
14	18.03	13.00	15.07	28	32.03	27.00	29.07
15	19.03	14.00	16.07	29	33.03	28.00	30.07
16	20.03	15.00	17.07	30	34.03	29.00	31.07
17	21.03	16.00	18.07				



Recommended P.C.B Layout



Applicable FPC

Specifications(规格) :

- Voltage rating(额定电压): 125V AC / DC
- Withstanding voltage(耐压值): 500V AC/minute
- Temperature range(工作温度): -25°C~+85°C
- Insulation resistance(绝缘电阻): ≥500MΩ
- Contact resistance(接触电阻): ≤0.03Ω

1019 W R S -XX X-LP SN XX
① ② ③ ④ ⑤ ⑥ ⑦ ⑧ ⑨

- ① 系列
- ② 类别: W-WAFER类
- ③ 外观形态: R-90° (带脚式)
- ④ 成型方式: S-SMT
- ⑤ PIN数: 单排-XX
- ⑥ 特殊码:
- ⑦ 材质: LP-LCP 94V-0
- ⑧ 电镀类别: G**-镀金 V**-镀全金
*01-1U" *02-2U" *03-3U" *05-5U"
*10-10U" *15-15U" *30-30U" *50-50U"
SN-镀亮锡 (70-120U") SN1-镀亮锡 (120U"Min.)
SW-镀雾锡 HS-高温锡
- ⑨ 颜色: 空码-本色或普通色

1019WRS-XX-LPSN	LCP UL 94V-0	BRASS	Tin-Plated	BRASS	Tin-Plated	1,000Pcs
PART NO	Material(Housing)	Material(Contacts)	Finish(Contacts)	Material(Fixed Tabs)	Finish(Fixed Tabs)	Q' ty/Reel

一般公差 GENERAL TOLERANCE
. X ±0.3
. XX ±0.2
. XXX ±0.1

CSWB 东莞市思索连接器有限公司
TERMINAL&CONNECTORS Dongguan Siweb Connectors CO.,LTD

料号 PART NO 1019WRS-XX-LPSN

品名 TITLE 1.00 mm Crimp Style connectors

核准 APPD 审核 CHK 绘图 DR 日期 DATA

单位 UNIT 比例 SCALE 图号 NUMBER 版次 REV
MM 1/1 A-106 A

日期 DATE	旧版次 OLD REV	新版次 NEW REV	变更内容 DESCRIPTION	审核 CHK	核准 APPD	角法 PROJECT
---------	----------------	----------------	---------------------	-----------	------------	---------------



宋丽 2013/07/18