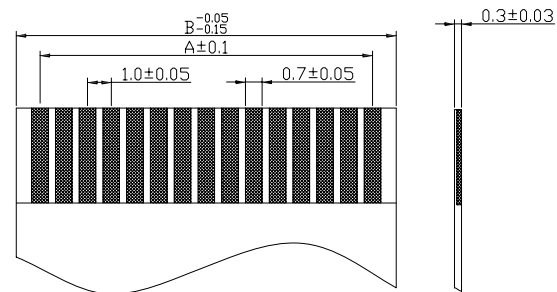
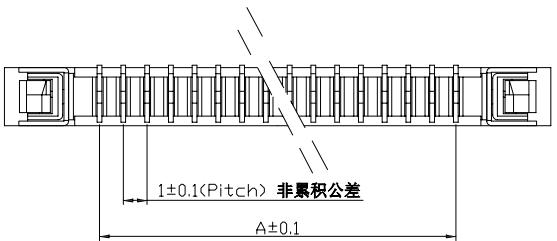
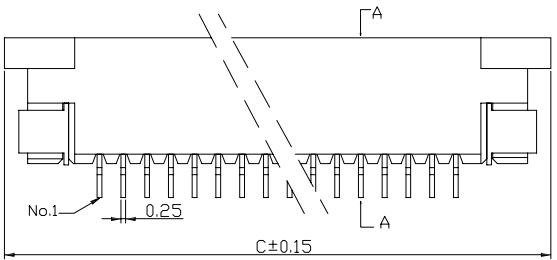
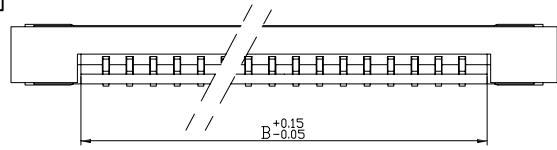
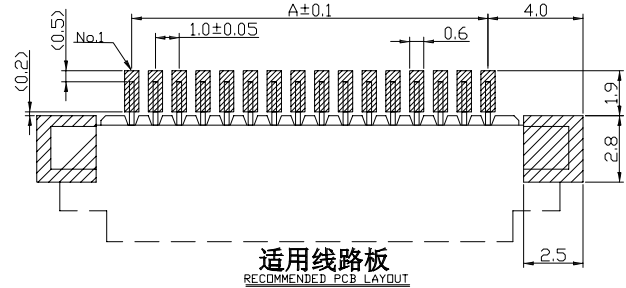
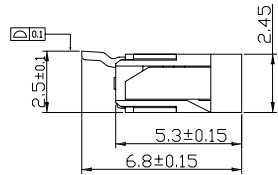
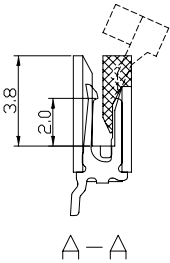


环保物料



适用FPC寸法  
APPLICABLE FPC



适用线路板  
RECOMMENDED PCB LAYOUT

Specifications(规格):

- Voltage rating(额定电压): 125V AC / DC
- Withstanding voltage(耐压值): 500V AC/minute
- Temperature range(工作温度): -25°C~+85°C
- Insulation resistance(绝缘电阻): ≥500MΩ
- Contact resistance(接触电阻): ≤0.03Ω

Poles	Dimensions (mm)			Poles	Dimensions (mm)		
	A	B	C		A	B	C
4	3.00	5.10	11.00	23	22.00	24.10	30.00
5	4.00	6.10	12.00	24	23.00	25.10	31.00
6	5.00	7.10	13.00	25	24.00	26.10	32.00
7	6.00	8.10	14.00	26	25.00	27.10	33.00
8	7.00	9.10	15.00	27	26.00	28.10	34.00
9	8.00	10.10	16.00	28	27.00	29.10	35.00
10	9.00	11.10	17.00	29	28.00	30.10	36.00
11	10.00	12.10	18.00	30	29.00	31.10	37.00
12	11.00	13.10	19.00	31	30.00	32.10	38.00
13	12.00	14.10	20.00	32	31.00	33.10	39.00
14	13.00	15.10	21.00	33	32.00	34.10	40.00
15	14.00	16.10	22.00	34	33.00	35.10	41.00
16	15.00	17.10	23.00	35	34.00	36.10	42.00
17	16.00	18.10	24.00	36	35.00	37.10	43.00
18	17.00	19.10	25.00	37	36.00	38.10	44.00
19	18.00	20.10	26.00	38	37.00	39.10	45.00
20	19.00	21.10	27.00	39	38.00	40.10	46.00
21	20.00	22.10	28.00	40	39.00	41.10	47.00
22	21.00	23.10	29.00				

1017 WRS-XX X-46 SN XX

- ① 系列
- ② 类别: W-WAFER类
- ③ 外观形态: R-90° (带脚式)
- ④ 成型方式: S-SMT
- ⑤ PIN数: 单排-XX
- ⑥ 特殊码:
- ⑦ 材质: 46-PA46 94V-0
- ⑧ 电镀类别: G\*\*-镀金 V\*\*-镀全金  
\*01-1U" \*02-2U" \*03-3U" \*05-5U"  
\*10-10U" \*15-15U" \*30-30U" \*50-50U"  
SN-镀亮锡(70-120U") SN1-镀亮锡(120U"Min.)  
SW-镀雾锡 HS-高温锡
- ⑨ 颜色: 空码-本色或普通色

1017WRS-XX-46SN	PA46 UL 94V-0	PPS UL 94V-0	Phosphor Bronze	Tin-Plated	Phosphor Bronze	Tin-Plated	1,000Pes
PART NO	Material(Housing)	Material(Slider)	Material(Contacts)	Finish(Contacts)	Material(Fixed Tabs)	Finish(Fixed Tabs)	Q' ty/Reel

一般公差 GENERAL TOLERANCE
.X ±0.3
.XX ±0.2
.XXX ±0.1

CSWB 东莞市思索连接器有限公司  
TERMINAL&CONNECTORS Dongguan Siweb Connectors CO.,LTD

料号 PART NO 1017WRS-XX-46SN

品名 TITLE 1.00 mm Crimp Style connectors

角法 PROJECT
⊗ ⊕

核准 APPD	审核 CHK	绘图 DR	日期 DATA
		黄明娟	2013/06/05

单位 UNIT	比例 SCALE	图号 NUMBER	版次 REV
MM	1/1	A-106	A

日期 DATE	旧版次 OLD REV	新版次 NEW REV	变更内容 DESCRIPTION	审核 CHK	核准 APPD