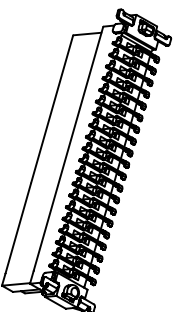
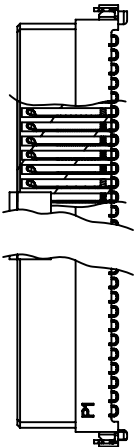
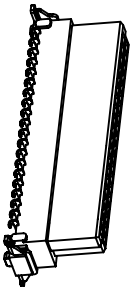
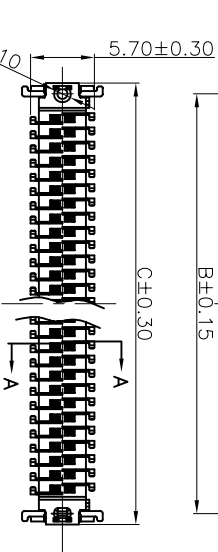
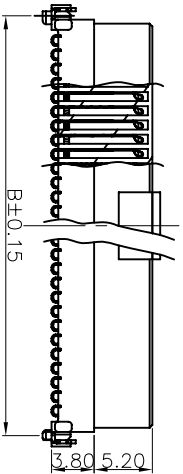
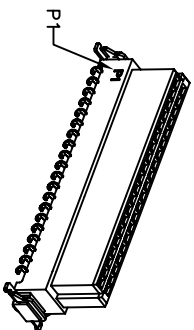
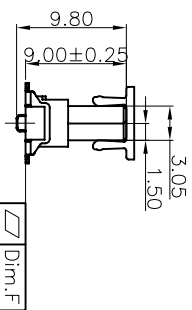
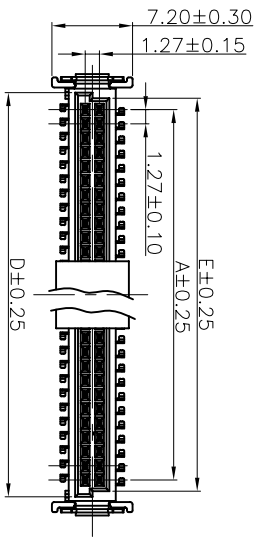


REV.	LOCAS.	DESCRIPTION	DATE	DRAWN
01	NEW	BATCH PRODUCTION INITIAL RELEASE:	2014.03.10	zouqiangliu
02	Δ	According to the actual requirement to update the latest specification	2014.10.06	楊濤



Specifications
 Current Rating:0.8Amp
 Insulation Resistance:1000MΩ Min.
 Dielectric Withstanding Voltage:500VAC
 Contact Resistance:30mΩ Max.
 Operating Temperature:-55°C to +125°C
 Materials
 Contact Material:Phosphor Bronze
 Insulator Material:High Temperature Thermoplastic, UL 94V-0 LCP or the equivalent material
 Colour:Black
 All materials must meet Greencomm hazardous substances control standards.

Pin No.	Dim.F
≤ 25pin	0.12
> 25pin	0.15

PIN NO.	A	B	C	D	E
2*06	6.35	10.77	13.20	9.37	8.37
2*13	15.24	19.66	22.09	18.26	17.26
2*25	30.48	34.90	37.33	33.50	32.50
2*30	36.83	41.25	43.68	39.85	38.85
2*34	41.91	46.33	48.76	44.93	43.93
2*40	49.53	53.95	56.38	52.55	51.55

Ordering Information

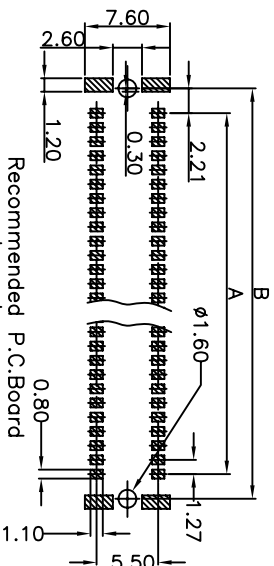
CBEC219 - XX XX B001 C 1 A X

No. of Pins per Row
06, 13, 25, 30, 34, 40

Contact Plating
79=5u" Au/80-160u" Matte Tin

F= (Finished Product+CAP), Tape&Reel

Recommended P.C.Board
Layout
(Tolerance:±0.05)



格 菱 股 份 有 限 公 司
Greencomm Corporation

GENERAL TOLERANCE

X:±5.0° X:±0.30

.X:±3.0° X:±0.25

.XX:±2.0° .XX:±0.15

.XXX:±1.0° .XXX:±0.10

DESIGN: 楊濤

CHECKED: 林澤雲

CO SIGNED: 徐軍博

APPROVED: Link

DATE: 2014.10.06

DATE: 2014.10.06

DATE: 2014.10.06

DATE: 2014.10.06

DWG. NO.

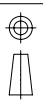
CBEC219-CB1CA

TITLE.

Pitch1.27 Female Connector
SMC TYPE-B SMT TYPE
HIGH9.00mm 180°

REV. 02 UNIT. mm SCALE. 1:1 PAGE. 1/1

SCALE. 1:1 PAGE. 1/1



.XXX:±1.0° .XXX:±0.10

APPROVED: Link

DATE: 2014.10.06

PART NO. CBEC219-XX XX B001C1AX

Pitch1.27 Female Connector
SMC TYPE-B SMT TYPE
HIGH9.00mm 180°