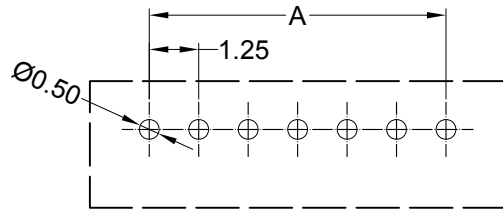
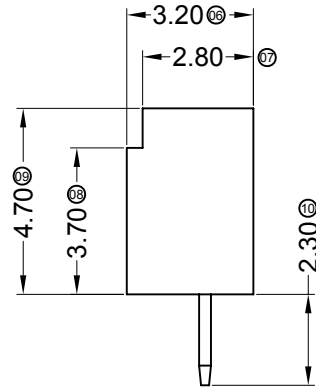
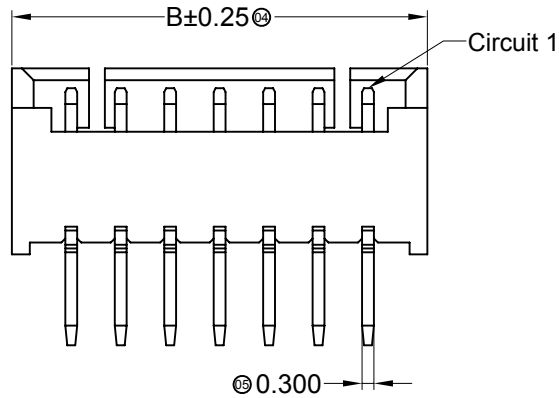
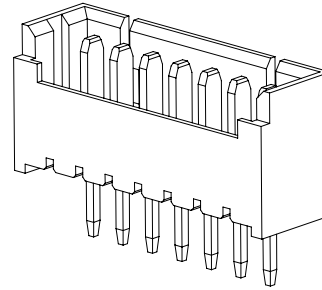
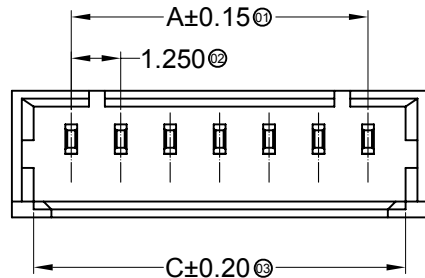
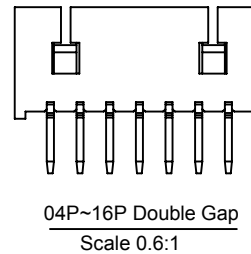
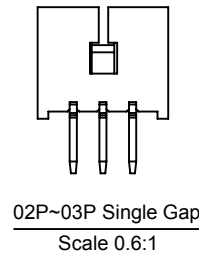


RoHS  Lead-free



Recommended P.C.B Layout
General Tolerance±0.05



Specifications :

- Voltage rating: 125V AC / DC
- Current rating: 1A AC / DC
- Withstanding voltage: 250V AC/minute
- Temperature range: -25°C~+85°C
- Insulation resistance: ≥100MΩ
- Contact resistance: ≤20mΩ
- After environmental testing: ≤40mΩ


9821 W V X-XX X-XX SN XX
① ② ③ ④ ⑤ ⑥ ⑦ ⑧ ⑨

- ① Series No.
- ② Category: W-wafer
- ③ Welding Board Angle: V- Straight 180°
- ④ Welding Way: Blank-DIP
- ⑤ Row No.-Pin No.: XX-02P~16P
- ⑥ Plug the Pin & Special No.:
- ⑦ Material: 46-PA46 94V-0 ; N0-PA66 94V-0
6T-PA6T 94V-0 ; LP-LCP 94V-0
- ⑧ Planting Category: SN-Bright tin plating ; SW-Matte Tin plating
- ⑨ Color: Blank-natural color

Poles	Dimensions(mm)			Poles	Dimensions(mm)		
	A	B	C		A	B	C
02	1.25	4.25	3.15	10	11.25	14.25	13.15
03	2.50	5.50	4.40	11	12.50	15.50	14.40
04	3.75	6.75	5.65	12	13.75	16.75	15.65
05	5.00	8.00	6.90	13	15.00	18.00	16.90
06	6.25	9.25	8.15	14	16.25	19.25	18.15
07	7.50	10.50	9.40	15	17.50	20.50	19.40
08	8.75	11.75	10.65	16	18.75	21.75	20.65
09	10.00	13.00	11.90				

9821WV-XX-LPSN	LCP UL 94V-0	Phorphos Bronze	Tin-Plated	9821H
9821WV-XX-6TSN	PA6T UL 94V-0			
9821WV-XX-46SN	PA46 UL 94V-0			
9821WV-XX-N0SN	PA66 UL 94V-0			
PART NO	Material	Material(Pin)	Finish(Pin)	Mates With SWB Housing

2015/04/25	C	D		Modify the drawing frame format	sylvia		GENERAL TOLERANCE X ±0.30 .XX ±0.20 .XXX ±0.10
2014/12/19	B	C		Add the LCP Part No	sylvia		
2014/05/13	A	B		Space of a Whole page Changes	Jova	Bob	
DATE	OLD REV	NEW REV	ECN	DESCRIPTION	CHECK	APPROVAL	PROJECT



思索连接器有限公司
SWB CONNECTORS CO.,LTD

APPROVAL	CHECK	DRAWN	DATA
Bob Sun	Jova Lau	Wuxiaotao	2014/05/13

PART NO. 9821WV-XX-XXSN			
TITLE 1.25mm Crimp Style Connectors			
UNIT MM	SCALE 1 : 1	NUMBER A-084	REV D